

197_3391

UBCHEA ARCHIVES
COLLEGE FILES
RG 11

Nanking
Academic
Student enrollment statistics
1912-1920

UNIVERSITY OF NANKING

TRANSFER

Statement

December 24, 1912

I. Departments of University proper:	No. of students	Foreign Instructors	Chinese Instructors
1. Preparatory Grammar & High School	431	11	17
2. College	70		
3. Medical	30	4 (3 to be added)	0
4. Teachers Training School opened October 1912	30	1	5
5. Agricultural Colony refugees	150	1	2
6. Language school for missionaries	47	3	3
and one Chinese teacher to each missionary student.			

II. Affiliated Schools.	No. of students	Foreign Instructors	Chinese Instructors
1. Theological Seminary	30	5	5
2. Bible School	60	same teachers	
3. Statistics of Primary and Secondary Schools of region not in hand.			

III. Property

1. Land - Acres 65	Cost with walls (gold)	\$44,776
(In addition, Bible School and Seminary has 20 acres and 6 buildings, total value	\$40,000)	
Hospital property about 12 acres with 5 buildings, cost	27,000)	
2. Buildings, 19 large, cost		114,351
		<u>\$159,127</u>

University of Nanking

IV. Revenue and Resources:

1. Receipts from or payments by Associated Missionary Societies.		
a. For salaries 12 teachers average \$1500		\$18,000
b. For other expenses annually		9,000
c. Medical Department, Seven Societies agree to provide a teacher each,		
1 Now 5 at \$1500		7,500
2. For annual expenses \$300 from each		2,000
2. Money raised among Chinese in last two years:		
1910		12,500
1911 (less on account of flood, famine and war)		12,000
Colonization scheme supported by Chinese.		
3. Money paid or pledged in America in last year (not including appropriations from Missionary Societies):		
a. For current expenses \$8,000 in 5 annual payments		
b. For land and buildings	130,500	
c. For endowment	65,000	
d. For other purposes	<u>10,000</u>	
	Total	213,500
4. Funds available from above for:		
a. Chapel		20,000
b. Chemistry & Physics laboratories		25,000
c. Biology & Geology		25,000
d. Dormitory		<u>26,000</u>
		\$96,000

University of Nanking

5. Foreign Christian Missionary Society is giving use of Dr. Macklin's Hospital and property at Drum Tower for Medical Department until we can pay the cost value, \$27,000 gold.

V. Special needs:

a. Endowment		\$300,000	
b. Equipment			
1. To purchase hospital property and land and 5 buildings		27,000	
2. Residences for present staff, 5 at \$4000.		20,000	
3. Second Dormitory to house Language School		30,000	with furnishings
4. New Modern Hospital		35,000	
5. Central Building		35,000	
6. Land, 35 acres to complete scheme		30,000	
7. Library - fireproof building		50,000	
8. Water and light plant		25,000	

VI. Other facts of importance:

- a. Agricultural Department with 700 acres, is under control of Colonization Association, Mr. Baillie and two other foreigners and Chinese, and supported so far entirely by Chinese and a grant from Famine Committee.
- b. The Language School for Missionaries is being financed from fees but needs accommodations for 40 young missionaries suddenly added to the Nanking community.
- c. Our most pressing need is for endowment. The University should have no less than \$500,000 to provide adequately for increased faculty of new college scheme, development of Teachers' Training School and the Medical Department and to make it possible to develop primary and secondary education under the missions throughout the region tributary to the College.

Alphabetical list of Junior and Senior College Students.

J=Junior Arts: JA=Junior Agriculture: JF=Junior Forestry: JM=Junior Medical:
JE=Junior Education: A=Agriculture: F=Forestry: C=College of Arts: Sp=Special:
MS=Middle School. The classification is for the fall, 1917.

- | | | | |
|---|--|---|--|
| <p>Ch'ang Ch'ien, C.
Chang Ch'wan-ching, F.
Chang Fah-chung, F.
Chang Hai-shwan, A.
Chang Li-ch'ao, C.
Chang Nien-yuen, JA.
Chang Pao-yung, J.
Ch'ang P'ei-ling, J.
Chang P'ih-shan, MS.
Chang Ren-chieh, J.
Chang Tso-wen, JA.
Chang T'ung-wu, F.
Chang Wei-chen, F.
Chang Yen-nien, J.
Chao Ren-hwa, MS.
Chao Ts'ung-ting, A.
Chao T'ung-lien, J.
Ch'en Chang, C.
Chen Ch'ang-hung, C.
Ch'en Chang-wei, J.
Ch'en Chen, A.
Ch'en Chen-i, J.
Ch'en Chih, MS.
Ch'en Chi-shan, J.
Chen Ch'ing-chung, JA.
Chen Chung, JA.
Ch'en Chung-shen, C.
Chen Heo-hwai, J.
Ch'en Hsioh-i, C.
Ch'en I-tsu, C.
Ch'en K'eh-ching, J.
Ch'en Kwan-shwen, A.
Ch'en Shwen-yuin, J.
Chen Tsi-fan, JM., Sp.
Ch'en Yen-ch'ao, J.
Ch'en Yuin-swen, J.
Cheo Chia-shu, J.
Cheo Hsiao-ch'en, C.
Cheo Hsioh-ru, J.
Cheo Ming-hwei, JA.
Cheo Ru-hen, J.
Cheo Shui-chang, C.
Cheo Ting-tsen, JA.
Ching Hsuen-shi, J.
Choh Ching-chi, JA., Sp.
Chu Chi-ch'ang, J.
Chu Chia-chi, C.
Chu Feng-chang, J.
Chu Pao-tsu, C.
Chu Teh-fang, C.
Chu T'iao-swen, C.
Chu Tsih-yuen, MS.
Chu Yung-ling, J.
Chuh En-seng, C.
Chung Wei-ch'en, J.
Chung Wen-kw'ei, J.
Fang Ch'en-chuin, C.
Fang Hsuin, J.
Fang I-chung, F.
Fang P'ei-ling, JE.
Fang Tsen, J.</p> | <p>Fang Tsi-yuin, C.
Feng Hsuin, C.
Feng Rui, JA.
Feng Chung-yen, J., Sp.
Ho Ping, J.
Hsia Lih-kwei, J.
Hsing I-ch'ü, J.
Hsiung Ch'wen-hsü, MS.
Hsiung Ch'wen-t'ao, MS.
Hsiung Ta-chuen, MS.
Hsü Cheh, J.
Hsü Chung-ch'i, JA.
Hsuen Chang-yuin.
Hu Kwan-hsuin, J.
Hu Poh-heo, J.
Hu Sih-san, M.
Hu Toh, J.
Hung Hsing-peh, MS.
Hung Rwen-ts'iang, J.
Hwa Peh-hsiung, A.
Hwa Ying-siang, JA.
Hwang Hsü-ru, JM., Sp.
Hwang Hsuen, JA.
Hwang Ren-chieh, C.
Hwang T'ien-yü, A.
Hwang Tsung, F.
K'ang Han, JF.
Kao En-yung, J.
Kao Ping-fau, F.
Ken Tso-ling.
Kiang Hung-ch'i, C.
Kiang Pen-kung, MS.
Kiang Ts'u-chi, J.
K'o Ta-yung, C.
Ku Tsen-k'an, J.
K'wan Sung-ling, A.
Kwoh Shao-hsien, MS.
Lai Ruh-hsun, A.
Lan Pao-liu, C.
Leng Pao-seng, C.
Li Ching-hsüen, JE.
Li Ch'ing-ling, C.
Lih Ch'ing-yuin, JE.
Li Chuin-k'ang, A.
Li Fu-nung, JA.
Li Hsiang-ping, F.
Li Hung-teh, C.
Li Kwei-ch'en.
Li Kwoh-tung, C.
Li Sheo-hen, JA.
Li Shwen-ch'ing, F.
Li Tai-fan, F.
Li Tsih-hsing, A.
Li Yen-teh, F.
Li Yung, F.
Ling Chen-sheng, C.
Ling Chi-ch'ang.
Ling Kan, JF.
Ling Wei, C., Sp.</p> | <p>Ling Yung-kwan, J.
Liu Cheng-yü, J.
Liu Chi-hsuen, JE.
Liu Chi-rao (yao), JE.
Liu Chü-ch'ing, JM.
Liu Hen, J.
Liu Kwoh-chuin, J.
Liu Kwoh-yung, J.
Liu Nai-ching, C.
Liu Ren-chieh, J.
Liu Ru, JE.
Liu T'ing-fan, J.
Liu T'ing-wei, J.
Liu Tseng-ih, J.
Liu Tsi-neng, J.
Liu Ts'ung-pen, JA.
Liu Yen-pen, J.
Lo Wen-hao, J.
Lu Pao-ru, J.
Lu P'ei-chang, F.
Luh Tsung-i, J.
Ma Ying-ren, J.
Ma Chien-chang, MS.
Mao Yung, JA.
Ni Wen-sing, F.
P'an Chien-ch'ing, A.
P'an Hsioh-ts'an, F.
P'an Wen-fuh, F.
Pao Hwa, J.
Pao Yuen, J.
Paul, J. Harland, J.
P'eng K'eh-chung, F.
Ren Ching-chang, C., Sp.
Shen Chen-t'an, J.
Shen I-ch'ien, F.
Shen Lih-ch'en, JA.
Shen T'si-hwei, JA.
Shi K'wei-ling, JA.
Shu Wen-k'ai, J.
Sie Ch'en-hsuin, J.
Sie Tsi-ch'ao, JE.
Su Chen-yeh, MS.
Sueh Choh-tung, JA.
Swen I-fei, JE.
Swen Teh-heo, J.
Swen T'ung-chang, F.
T'ai Tsung-yueh, F.
T'an Chi-yü, A.
T'an Chia-chwan, JA.
T'ang Meo-ru, J.
T'ao Yen-ch'iao, J.
Teng Ch'wan-ting, F.
Teng Pan-suen, C.
Ting Tso-ch'en, JE.
Ts'ai Chang-ru, J.
Ts'ai Lien-hsi, J.
Ts'ai Mo-seng, C.
Tsiang Chia-hsiung, MS.</p> | <p>Tsiang Hwei-ying, JA.
Tsiang Lien, J.
Tsiang Ts'ung-li, JM.
Tsiang Ying-cheo, JE.
Ts'ien Tai-hsing, MS.
Ts'ien Teh-hsing, J.
Ts'ü Ch'en, A.
Ts'ü Chen-k'en, A.
Ts'ü Hwai, F.
Ts'ü Ming-kao, MS.
Ts'ü Ping-hao, C.
Ts'ü Rwen-ts'iang, C.
Ts'ü Shao-wen, J.
Ts'ü Tsing, A.
Ts'ui Ts'iang-chih, C.
Tu Hsing-hwa, J.
Tu Hsing-teh, J.
Tung Chi-hsioh, J.
Tung Hwa, F.
Tung Ming-nan, JM., Sp.
Wang Chen-chen, J.
Wang Ch'en-fan, J.
Wang Ch'en-lung, J.
Wang Chi-ts'iang.
Wang Ch'ing-kung, C.
Wang Hai-yuin, J.
Wang Han-peh, J.
Wang K'ang-heo, C.
Wang Kang-t'ing, J.
Wang Kwoh-ting, A.
Wang Ping-ts'iu, JA.
Wang Shao-tswen, JA.
Wang Shi-hsü, C.
Wang Shwen-keng, JA., Sp.
Wang Ta-chao, MS.
Wang Wen-tien, C., J.
Wei Hsioh-ren, MS.
Wei P'eng-sheo.
Wen Wen-kwan, A.
Wu Choh-ming, F.
Wu Chw'an-hsiao, J.
Wu Shi-shui, C.
Wu Ts'i-kwan, J.
Wu T'ung-loh, J.
Wu Wen-an, A.
Yang Chia-kwen.
Yang Chuin, MS.
Yang Hwei, F.
Yang P'ei-yuen, JA.
Yang T'ien-ch'en, JA.
Yang Wang-hsuin, J.
Yao Kwoh-liang, J.
Yeh Yuen-ting, A.
Yen Ch'ao-chieh, J.
Yü Mei-shen, JE.
Yü Twen-ho, J.
Yü Twen-pen, J.
Yü Wan-ts'ai, JA.
Yung Chia-yuen, C.</p> |
|---|--|---|--|

Vol. IV.

UNIVERSITY OF NANKING

No. 7.

BULLETIN

FACULTY

AND

STUDENT ENROLMENT

1918—1919



SHANGHAI:

Printed at the American Presbyterian Mission Press

1920

Vol. IV.

UNIVERSITY OF NANKING

No. 7.

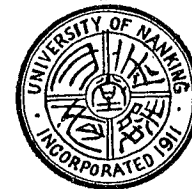
BULLETIN

FACULTY

AND

STUDENT ENROLMENT

1918—1919



SHANGHAI:

Printed at the American Presbyterian Mission Press

1920

CONTENTS

	Pages
Officers of Instruction and Administration...	I
Register of Students :	9
College of Agriculture and Forestry ...	9
College of Arts	II
Junior College	13
School of Education	18
Middle School	19
Model School	24
Department of Missionary Training ...	30
Nurses' Training School	32
Total Registration for 1918-1919	33
Index of Students	34

OFFICERS OF INSTRUCTION AND ADMINISTRATION

BOWEN, ARTHUR JOHN, B.A., LL.D.

President of the University, Acting Dean of the College
of Arts.

English Literature, College of Arts.

*WILLIAMS, JOHN ELIAS, B.A., D.D.

Vice-President of the University, Chaplain.

Greek, College of Arts.

BAILIE, JOSEPH, B.A.

On Colonization Service in Manchuria.

BRAASTAD, MISS FLORENCE A.

Economics, English, Political Science, Junior College;
History, Junior College and Middle School.

BREWER, MRS. MAY WHEELER, B.A.

English, Model School.

CHANG, MISS CHIEN-HWA

Kindergarten.

CHANG CHIEN-TSU, B.A. (Chinese)

Chinese, Model School.

CH'EN CHANG-CHI

Grade Teacher, Model School.

CH'EN CHEN, B.S.

Agriculture, College of Agriculture and Forestry.

CH'EN CHING-CHANG, B.A.

Chinese History, Chinese Phonetics, Civics, Economics,
Middle School.

* On furlough.

- CH'EN CHUEN-HO, B.A.
Geography, History, Mathematics, Religious Education,
Middle School.
- CH'EN SHUI-I, B.A.
Mathematics, Model School.
- CHEO CHI-SHAN, B.A. (Chinese)
Chinese, Middle School.
- ‡CHI KWOH-PING
Chinese, Model School.
- CHIA FUH-T'AN, B.A. (Chinese)
Head Chinese Teacher, Language School.
- CLARK, MISS MILDRED HELEN, B.A.
English, Middle School.
- §CLEMONS, HARRY, M.A.
Librarian of the University.
English Literature, College of Arts.
- ‡FOLK, IM-CHEUNG, M.S.
Chemistry, College of Arts and Junior College.
- †GILBERT, MRS. ALVIN W.
English, Model School.
- HAMILTON, CLARENCE HERBERT, Ph.D.
Philosophy and Psychology, College of Arts.
- HU CHI-YING
Chinese, Model School.
- HU KEN-CHIU
Physical Instruction, Middle and Model Schools.
- HUMMEL, WILLIAM FREDERICK, M.A.
Religious Education, College of Arts, Junior College,
School of Education, Middle School.

† Autumn semester.

‡ Spring semester.

§ On war service in Siberia.

- HUNG CHANG, B.A.
Geography, Religious Education, and Science, Middle
School.
- HUNG CHEN-TEH
Office Secretary, School of Education.
- HUNG YU-FENG, B.A.
Acting Librarian of the University.
- HUTCHESON, ALLEN C., M.D.
Assistant Superintendent of the University Hospital.
- I HSIEN-T'ING, B.A. (Chinese)
Chinese, College of Arts, Junior College.
- ING ZAUNG-TEH, M.A.
‡Proctor of the Colleges.
Biology, Physics, Junior College, School of Education.
- JOHNSON, MISS ELIZABETH HOLMES, B.A.
English, Middle and Model Schools; Physiology, Middle
School.
- JONES, MRS. JOHN REESE
Preceptress of the Language School.
- KEEN, CHARLES SCULL, M.A.
Dean of the Language School (Department of Missionary
Training).
- †KIM HYUN-SIK
Japanese, College of Arts.
- ‡KUNG LING-CHI
Chinese Writer, College of Agriculture and Forestry.
- KUNG TSEN, B.A.
English, Religious Education, Science, Model School.
- KWOH P'EI
Industries, School of Education and Middle School;
Manual Training, Model School.

† Autumn semester.

‡ Spring semester.

- LENG LIEN-CHIAH, B.A.
Mathematics and Religious Education, Middle School.
- †LI CHUIN-K'ANG
Assistant in Agriculture, College of Agriculture and Forestry.
- LI HUNG-TEH
Office Secretary, Middle School.
- LI SHU-SHEN, B.A.
English, Geography, Mathematics, Religious Education, Model School.
- †LI SHWEN-CH'ING
Assistant in Forestry, College of Agriculture and Forestry.
- †LI TAI-FANG
Assistant in Forestry, College of Agriculture and Forestry.
- †LI YING (Alexander Y. Lee), M.S.
Proctor of the Colleges.
Chemistry, College of Arts, Junior College.
- LIN DAO-YANG (D. Y. Lin), M.F.
Forestry, College of Agriculture and Forestry.
- LIU CHING-CHEN, B.A.
Proctor of the Primary and Secondary Group.
English, Middle School.
- †LIU, MRS. CHING-CHEN
Geography, History, Mathematics, Religious Education, Model School.
- LIU CHING-PAN, B.A.
Chinese Translator, College of Agriculture and Forestry.
- LIU CHUNG-LU, B.A.
Chinese, Middle School.

† Autumn semester. ‡ Spring semester.

- LIU KING-SHU, Ph.D.
Chinese History, Literature, and Philosophy, College of Arts.
- LIU, MRS. KING-SHU, B.S.
Kindergarten.
- MARX, EDWIN, M.A.
English Literature, College of Arts.
- †MILLER, MISS WINIFRED FISKE
English, Junior College and Model School.
- MOSS, LESLIE BATES, B.S., M.A.
Acting Registrar of the College of Arts and of the Junior College; Acting Dean of the School of Education.
Education, History, College of Arts, Junior College, School of Education.
- †MUH HAI-PEN
Education, School of Education and Middle School.
- OWEN, LEWIS JAMES
Treasurer of the University.
- PIERCE, MISS THIRZA MAY, M.A.
Acting Principal of the Model School.
Acting Supervisor of Practice Teaching in the Model School, School of Education.
- PURCELL, MISS MINNIE H.
Office Secretary, The Colleges.
- REISNER, JOHN HENRY, M.S.A.
Dean of the College of Agriculture and Forestry.
Soils and Farm Crops, College of Agriculture and Forestry; Geology, Junior College.
- ROYS, HARVEY CURTIS, M.S.
Mathematics and Physics, College of Arts and Junior College.

† Spring semester.

- SAMPLE, JOHN LA VANT, B.S.
Forestry, College of Agriculture and Forestry.
- *SARVIS, GUY WALTER, M.A.
Dean of the College of Arts.
Economics and Sociology, College of Arts.
- † SHI SHIH-CHANG
Chinese Writer, The Colleges.
- SIE CHIA-SHEN, M.S.A.
Animal Husbandry, College of Agriculture and Forestry.
- SLOAN, THOMAS DWIGHT, M.D.
Superintendent of the University Hospital.
- SMALL, ALEXANDER GLOVER, M.E.
Superintendent of Construction.
- STEARNS, MISS MARY MABEL
English, Middle and Model Schools.
- SUEN I-MEO
Chinese (Mandarin), Middle School.
- TAI PEN-SHAN
Vice Principal of the Model School.
Assistant Supervisor of Practice Teaching in the Model School, School of Education; English, Mathematics, Science, Model School.
- THOMSON, JAMES CLAUDE, M.S., B.D., M.A.
Chemistry, College of Agriculture and Forestry, College of Arts.
- TSAN HEN, B.A.
Chinese (Classics and Phonetics), Middle School.
- Ts' IEN TIEN-HO, M.S.A.
Sericulture, College of Agriculture and Forestry.

* On furlough.

† Spring semester.

- WALKER, MISS ELIZABETH
Secretary and Treasurer of the University Hospital.
- WANG CHANG-PING, Ph.D.
Education and Educational Psychology, Junior College,
School of Education, Middle School; Geography,
Middle School; Sociology, College of Arts.
- WANG YAO-T'ING
Assistant Head Chinese Teacher, Language School.
- WARNER, MISS FLORENCE M., R.N.
Superintendent of Nurses and of Nurses' Training
School, University Hospital.
- WEIGEL, WILLIAM HAROLD, JR., B.S.
General Secretary, University Christian Association.
- WHITE, MISS ANNE CATHERINE
English, Junior College, Model School.
- WILSON, WILBUR FISK, B.A.
Superintendent of the Primary and Secondary Group
and Principal of the Middle School.
English, Middle School.
- WILSON, MRS. WILBUR FISK, B.A.
Religious Education, Middle School.
- *WIXON, MISS ADELAIDE MAY (New York State Normal)
Principal of the Model School.
English, Model School.
- † WOODWORTH, CHARLES WILLIAM, M.S.
Special Lecturer and Investigator in Entomology, Col-
lege of Agriculture and Forestry.
- WU PING-KW'EN
Grade Teacher, Model School.

* On furlough.

† Autumn semester.

†WU SHEO-TAO, B.A.
English and Religious Education, Middle School.

†WU, MRS. SHEO-TAO
Geography, Mathematics, Model School.

YÜ LIH-CHĪ, B.A.
Physics, School of Education.

† Autumn semester.

REGISTER OF STUDENTS*

THE COLLEGE OF AGRICULTURE AND FORESTRY

AGRICULTURAL STUDENTS

Graduates, June 1919

Ch'en Kwan-shwen	Nanhai, Kwangtung
Hwang T'ien-yü	Putien, Fukien
Li Chuin-k'ang	Wuhsien, Kiangsu
Ts'ü Chen-k'en	Shihtaihsien, Anhwei

Third Year (16)†

Ch'en Kwan-shwen	Nanhai, Kwangtung
Hwang T'ien-yü	Putien, Fukien
Li Chuin-k'ang	Wuhsien, Kiangsu
Ts'ü Chen-k'en	Shihtaihsien, Anhwei

Second Year (15)

Chang Hai-shan	Kintan, Kiangsu
Feng Rui	Hongkong, Kwangtung
Hwa Peh-hsiung	Tangkihsien, Chekiang
Kw'an Sung-ling	Heungshan, Kwangtung
Lai Ruh-hsuei	Yungting, Fukien
Mao Yung	Wuchen, Kiangsu
T'an Ch'i-yü	Yangchow, Kiangsu
Ts'ü Tsing	Shanghai, Kiangsu
Wang Kwob-ting	Wuchen, Kiangsu
Wen Wen-kwan	Taishan, Kwangtung
Wu Wen-an	Heungshan, Kwangtung

First Year (14)

Ch'en Kwei-chi	Shanghai, Kiangsu
----------------	-----	-----	-------------------

* The classification is that of the autumn semester, 1918-1919, but the register includes also the names of students who entered the University in the spring semester: (a) indicates those enrolled during the autumn semester and not during the spring semester of 1918-1919; (s) indicates those enrolled during the spring semester and not during the autumn semester of 1918-1919.

† The number after the year indicates the year in the university course.

FORESTRY STUDENTS

Graduates, June 1919

Chang Chw'an-ching	...	Kashing, Chekiang
Chang T'ung-wu	...	Haimen, Kiangsu
Chang Wei-chen	...	Kashing, Chekiang
Kao Ping-fang	...	Poshan, Shantung
Ken Tso-ling	..	Tsinghsien, Chihli
Li Shwen-ch'ing	...	Haihsien, Shantung
Li Tai-fang	...	Tsimo, Shantung
Ni Wen-sing	...	Hohsien, Anhwei
P'an Hsioh-ts'an	...	Hwailing, Anhwei
P'en K'eh-chung	...	Kwanshan, Honan
Shen I-ch'ien	...	Kating, Kiangsu
Ts'ü Hwai	...	Yingchowfu, Anhwei
Tung Hwa	...	Anking, Anhwei

Third Year (16)

Chang Chw'an-ching	...	Kashing, Chekiang
Chang T'ung-wu	...	Haimen, Kiangsu
Chang Wei-chen	..	Kashing, Chekiang
*Fang Ih-chung	...	Kwangshan, Honan
*Hwang Tsung	...	Hwangchow, Honan
Kao Ping-fang	...	Poshan, Shantung
Ken Tso-ling	...	Tsinghsien, Chihli
Li Shwen-ch'ing	...	Haihsien, Shantung
Li Tai-fang	...	Tsimo, Shantung
*Li Yen-ts'eh	...	Tsingping, Shantung
*Li Yung	...	Chiensanhsien, Anhwei
*Lu P'ei-chang	...	Hohsien, Anhwei
Ni Wen-sing	...	Hohsien, Anhwei
P'an Hsioh-ts'an	...	Hwailing, Anhwei
*P'an Wen-fuh	...	Hohsien, Anhwei
P'en K'eh-chung	...	Kwanshan, Honan
Shen I-ch'ien	...	Kating, Kiangsu
*Tai Tsung-yüeh	...	Tienchang, Anhwei
Ts'ü Hwai	...	Yingchowfu, Anhwei
Tung Hwa	...	Anking, Anhwei
*Wu Choh-ming	...	Ningkwofu, Anhwei
*Yang Hwei	...	Chienchow, Yunnan

* To graduate in February 1920.

Second Year (15)

Li Hsiang-ping	...	Changshan, Shantung
Teng Chw'an-ting	...	Kiangyin, Kiangsu

First Year (14)

Li Chi-t'ung	...	Nanking, Kiangsu
--------------	-----	------------------

SHORT COURSE IN SERICULTURE*

Chang Chen-chia	...	Chuchow, Anhwei
Chang Hai-hsing	...	Tsitung, Shantung
Chao Chi-kw'ei	...	Ani, Shansi
Chao Hwei-san	...	Peihhsien, Kiangsu
Chen Wang-fu	...	Taichow, Chekiang
Cheo Lien-yuen	...	Tsitung, Shantung
Chu Chia-hsing	...	Henyang, Hunan
Fang Tsen	...	Chuchow, Anhwei
Feng Ru-pao	...	Taichow, Shantung
Feng Yü-hen	...	Liuchü, Shantung
Ho Chi	...	Kweihsi, Kiangsi
Hwang Ching-wei	...	Hsihhsuen, Anhwei
Kiang Wang-ch'ing	...	Kweihsi, Kiangsi
Kung Wei-lung	...	Puhsuen, Shantung
Li Chw'en-t'ang	...	Tsitung, Shantung
Ma Ch'en-ih	...	Wenshui, Shansi
Ma Hung-yü	...	Tsitung, Shantung
Rao Ch'ing-ming	...	Kwangtsi, Hupeh
Siu Tseh-siang	...	Paoking, Hunan
Tu Yang-chen	...	Wenshui, Shansi
Ts'ü Ching-tsai	...	Kweihsi, Kiangsi
Ts'ü Tsi-hwei	...	Chuchow, Anhwei
Wang An-nan	...	Kweihsi, Kiangsi
Wang Ch'en-chi	...	Tsitung, Shantung
Wang Ch'en-shui	...	Tsitung, Shantung
Wang P'u-ying	...	Shantung

*The course lasted from April 10 to July 9, 1919, thirteen weeks.

THE COLLEGE OF ARTS

Graduates, June 1919

Cha Ch'ien	...	Wulu, Anhwei
Ch'en I-tsu	...	Chinkiang, Kiangsu
Ch'en Tao-lung	...	Nanfensien, Kiangsu
Cheo Shui-chang	...	Nanking, Kiangsu
Fang Ch'en-chuin	...	Nanking, Kiangsu

Kiang Hung-chi	Nanchang, Kiangsi
K'ò Ta-yung	Chungking, Szechwan
Leng Pao-seng	Nanking, Kiangsu
Li Hung-teh	Nanking, Kiangsu
Liu Nai-ching...	Chaohsien, Anhwei
Liu Ts'ung-pen	Luanchow, Anhwei
P'an Chien-ch'ing	Wuhsien, Kiangsu
Ts'ui Ts'iang-chih	Wuhu, Anhwei
Wang Ch'ing-kung	Nanking, Kiangsu

Third Year (16)

Cha Ch'ien	Wuhu, Anhwei
<i>a</i> Cheo Shui-chang	Nanking, Kiangsu
<i>a</i> Fang Ch'ien-chuin	Nanking, Kiangsu
<i>a</i> Kiang Hung-ch'i	Nanchang, Kiangsu
<i>a</i> K'ò Ta-yung	Chungking, Szechwan
P'an Chien-ch'ing	Wuhsien, Kiangsu
<i>a</i> Ts'ui Ts'iang-chih	Wuhu, Anhwei
Wang Ch'ing-kung	Nanking, Kiangsu

Second Year (15)

Chang Li-ch'ao	Ningkwofu, Anhwei
Ch'en Hsioh-i	Nanking, Kiangsu
Ch'en I-tsu	Chinkiang, Kiangsu
Chu Chia-ch'i	Yenchow, Chekiang
Fang Tsi-yuin...	Chinkiang, Kiangsu
Feng Hsuin	Nanking, Kiangsu
Lan Pao-liu	Yangchow, Kiangsu
Leng Pao-seng	Nanking, Kiangsu
Li Hung-teh	Nanking, Kiangsu
Li Kwoh-tung..	Nanking, Kiangsu
Ling Chen-shen	Swatow, Kwangtung
Liu Ts'ung-pen	Luanchow, Anhwei
Ts'ai Mo-seng	Nanking, Kiangsu
<i>a</i> Ts'ui Ping-hao	Seoul, Korea
Yung Chia-yuen	Nanking, Kiangsu

First Year (14)

Chang Sing-fu...	Nanking, Kiangsu
<i>a</i> Chen Ch'ang-hung	Tsingyanghsien, Anhwei
Chen Heo-hwai	Tsingyanghsien, Anhwei
Cheo Chia-shu	Nanking, Kiangsu
Cheo Hsiao-ch'en	Wuhu, Anhwei
<i>a</i> Ching Hsuen-hsi	Korea
<i>s</i> Chu Chi-ch'ang	Sinfengchen, Kiangsu

Chu Pao-ts'u	Soochow, Kiangsu
Chu Teh-fang	Nanking, Kiangsu
Chuh En-seng...	Chinkiang, Kiangsu
Hsing I-ch'ü	Nanking, Kiangsu
Hsü Cheh	Suiansien, Chekiang
Li Ch'ing-ling...	Hohsien, Anhwei
Liu Kwoh-chuin	Nanking, Kiangsu
Liu Kwoh-yung	Nanking, Kiangsu
<i>a</i> Liu Shi-shi	Chaochow, Kwangtung
Pao Hwa	Hangchow, Chekiang
Seng Yung-ch'ing	Tsimo, Shantung
Teng Pan-suen	Soochow, Kiangsu
Tsiang Lien	Changchow, Kiangsu
Tung Chi-hsioh	Ningkwofu, Anhwei
Wang Ch'en-fang	Wuhsien, Kiangsu
Wang Hai-yuin	Taihsien, Kiangsu
Wang Han-peh	Hangchow, Chekiang
Wang K'an-heo	Hofei, Anhwei
Wang Wen-t'ien	Nanking, Kiangsu
Wu Shi-shui	Nanking, Kiangsu

Special

<i>a</i> P'en Ch'ang-ling	Changsha, Hunan
<i>a</i> Wang Hsien-hsing	Changsha, Hunan

THE JUNIOR COLLEGE

Graduates, June 1919

Chu Chieh-yuen, A.	Nanking, Kiangsu
Fang Hsuin, A.	Tungchen, Anhwei
Feng Rui, Ag.	Hongkong, Kwangtung
Shen Ch'i-tung, A.	Tsingkiang, Kiangsu
Shen Ts'i-hwei, Ag.	Shanghai, Kiangsu
Sie Ch'en-hsuin, A.	Tsailshih, Anhwei
Sueh Choh-tung, A.	Showchow, Anhwei
Tsiang Ts'ung-li, M.	Hwaiyuan, Anhwei

Second Year (13)

Chang Chuin-t'u, A.	Lunganhsien, Kirin
Chang Nien-yuen, Ag.	Shanghai, Kiangsu
Chang Sih-yü, Ag.	Shanghai, Kiangsu
Chang Tso-wen, Ag.	Tientsin, Chihli
<i>a</i> Chang Wen-ching, A.	Tientsin, Chihli
Chao Lien-kw'ei, A.	Tientsin, Chihli
Chao Lih-shan, A.	Telhsienlung, Chihli

	Chao Shī-tseh, A.	Pukow, Kiangsu
	Chao T'ung-lien, A.	Chinkiang, Kiangsu
<i>a</i>	Chen Ch'ing-chung, Ag.	Canton, Kwangtung
	Ch'en Chi-shan, A.	Nanking, Kiangsu
<i>a</i>	Ch'en Fuh-en, Ag.	Hangchow, Chekiang
	Ch'en K'eh-ching, M.	Hofei, Anhwei
	Ch'en Tsing-seng, A.	Tientsin, Chihli
<i>s</i>	Ch'en Tsu-kw'ei, F.	Ningpo, Chekiang
<i>a</i>	Cheo Ming-hwei, Ag.	Nantunghsien, Kiangsu
	Chu Feng-chang, A.	Nanking, Kiangsu
	Chu Fu-t'ang, A.	Wusih, Kiangsu
	Chung Chien-yuen, A.	Hingkwohsien, Kiangsi
	Chung Wei-ch'ei, A.	Chinkiang, Kiangsu
<i>a</i>	Chung Wen-kw'ei, A.	Tsaohsien, Anhwei
	Fang Hsuei, A.	Tungchen, Anhwei
<i>s</i>	Hsia Ch'ang-chen, A.	Chinkiang, Kiangsu
<i>s</i>	Hsia Ch'ang-ken, A.	Chinkiang, Kiangsu
	Hsiung Ch'ang-hsü, A.	Nanchang, Kiangsi
	Hsuen Ch'ang-yuin, A.	Korea
	Hu Toh, Ag.	Kiukiang, Kiangsi
	Hwa Ying-siang, Ag.	Wusih, Kiangsu
	Hwang Hsuen, Ag.	Nanking, Kiangsu
	Li Ching-hsuen, E.	Siamen, Fukien
	Li Sheo-hen, Ag.	Lihsing, Kiangsu
	Lih Ch'ing-yuin, E.	Singyanghsien, Honan
	Ling Kan, F.	Pingyanghsien, Chekiang
	Ling Shen-hwa, A.	Kutienhsien, Fukien
	Liu Chen-yü, A.	Chinkiang, Kiangsu
	Liu Chi-hsuen, E.	Wuhu, Anhwei
	Liu Chi-rao, E.	Peking, Chihli
	Liu Choh-hsi (Nan-ts'eh), Ag.	Kashing, Chekiang
	Liu Nai-ch'ei, A.	Chaohsien, Anhwei
<i>a</i>	Liu Ping-yang, Ag.	Rehho, Chihli
	Liu Ren-chieh, A.	Nanking, Kiangsu
	Liu Ru, E.	Weihwei, Honan
	Liu T'ing-fan, A.	Wenchow, Chekiang
	Liu T'ing-wei, A.	Wenchow, Chekiang
<i>a</i>	Lo Liang-chu, A.	Changsha, Hunan
<i>s</i>	Luh Tsung-i, A.	Haiyen, Chekiang
	P'au Shi-lwen, A.	Tientsin, Chihli
	Shen Ch'i-tung, A.	Tsingkiang, Kiangsu
	Shen Sheo-tsuen, Ag.	Kashing, Chekiang
	Shen Ts'i-hwei, Ag.	Shanghai, Kiangsu
<i>a</i>	Shi Kw'ei-ling, Ag.	Tientsin, Chihli
	Sie Ch'en-hsuei, A.	Tsaihsih, Anhwei
	Sueh Choh-tung, A.	Showchow, Anhwei
	T'an Ts'ai-chuin, Ag.	Shanghai, Kiangsu
	T'ang Meo-ru, A.	Tachu, Szechwan

	Ting Ming-chien, Ag.	Shalo, Nanyang
	Ting Tso-ch'ei, E.	Ningpo, Chekiang
<i>a</i>	Ts'ai Chang-ru, A.	Kunshan, Kiangsu
	Ts'ao Han-feng, Ag.	Shanyü, Chekiang
<i>a</i>	Tsiang Hwei-ying, Ag.	Soochow, Kiangsu
	Tsiang Ts'ung-li, M.	Hwaiyuan, Anhwei
<i>a</i>	Tu Hsing-hwa, A.	Yangchow, Kiangsu
	Wang Chw'en-hwa, Ag.	Rehho, Chihli
<i>a</i>	Wang Shao-tswen, Ag.	Tungfeng, Chihli
	Wang Ta-o, A.	Wuhu, Anhwei
	Wei Wen-han, A.	Tientsin, Chihli
	Wu Chw'an-hsiao, A.	Soochow, Kiangsu
	Wu I-mei, Ag.	Kweisihsien, Chihli
	Wu Wen-chen, Ag.	Tsingpuhsien, Kiangsu
<i>a</i>	Yang Kwan-hsia, A.	Shanghai, Kiangsu
	Yü Twen-ho, A.	Laitan, Anhwei
	Yü Yu-ren, A.	Kashing, Chekiang

First Year (12)

<i>a</i>	Chang K'eh-kung, A.	Yüntsao, Anhwei
<i>s</i>	Chang Men-p'ing, A.	Kunshan, Kiangsu
	Chang P'ei-nan, F.	Tsinan, Shantung
	Chang Pih-shau, A.	Rangoon, Burma
<i>a</i>	Chang Ren-chieh, A.	Nanking, Kiangsu
<i>a</i>	Chang Tsu-tsuen, A.	Taipingan, Anhwei
<i>a</i>	Ch'ang P'ei-ling, A.	Nanking, Kiangsu
<i>a</i>	Chao Ren-hwa, A.	Yüntsao, Anhwei
	Ch'en Ch'ang-shen, A.	Ningpo, Chekiang
	Ch'en Ch'ang-wei, A.	Nanking, Kiangsu
<i>a</i>	Ch'en Ch'i-hsioh, A.	Kashing, Chekiang
<i>s</i>	Ch'en Feng-hwai, A.	Nanking, Kiangsu
<i>a</i>	Ch'en Kwan-chao, Ag.	Nanhweihhsien, Kiangsu
<i>a</i>	Ch'en Shan-chi, Ag.	Changsha, Hunan
	Ch'en Shwen-yuin, Ag.	Changchow, Kiangsu
	Ch'en Yen-ch'ao, A.	Soochow, Kiangsu
	Ch'en Yuin-swen, A.	Nanking, Kiangsu
	Cheo Hsioh-ru, A.	Nanking, Kiangsu
<i>a</i>	Cheo K'ai, A.	Changchow, Kiangsu
	Cheo Ru-hen, A.	Ningpo, Chekiang
	Cheo Ts'ing-shan, E.	Tsutsi, Chekiang
<i>s</i>	Cheo Yung-nien, A.	Nanking, Kiangsu
	Ching Shan-chi, A.	Shanghai, Kiangsu
<i>s</i>	Ching Wen-liang, E.	Pukow, Kiangsu
<i>s</i>	Ch'iu Er-t'ang, F.	Ningpo, Chekiang
	Chu Chieh-yuen, A.	Nanking, Kiangsu
<i>a</i>	Chu Chwan-t'ing, A.	Nanking, Kiangsu
<i>s</i>	Chu Ts'ing-seng, E.	Wusih, Kiangsu

s	Chwan Chieh-ch'uin, E.	...	Swatow, Kwangtung
a	Fang Tsen, A.	...	Chuchow, Anhwei
	Ho Lih-pen, A.	...	Hangchow, Chekiang
a	Ho Tao-seng, A.	...	Yangchow, Kiangsu
a	Hsiung Chüh-fang, M.	...	Kiukiang, Kiangsi
	Hsiung Ta-ch'uen, A.	...	Tsaoyang, Hupeh
a	Hsü Ying, A.	...	Nanking, Kiangsu
	Hu Chen-kwoh, E.	...	Hwaiian, Kiangsu
a	Hu Chia-chi, Ag.	...	Nanking, Kiangsu
	Hu Sih-san, A.	...	Tungshan, Kiangsu
	Hung Hsing-peh, A.	...	Nanking, Kiangsu
	Hwang Yü, M.	...	Wusih, Kiangsu
	K'an Han, F.	...	Tingchowfu, Fukien
	Kao Fu-p'ei, A.	...	Wuhu, Anhwei
	Kiang Pen-kung, A.	...	Nanking, Kiangsu
	Kuh Yang, A.	...	Wenchow, Chekiang
a	Kung Tsi-siang, A.	...	Tanyang, Kiangsu
s	Kw'an Ming-kw'en, M.	...	Shanghai, Kiangsu
s	Kw'an Yao-kw'en, A.	...	Shanghai, Kiangsu
s	Kwoh Shao-hsien, Ag.	...	Sianshanhsien, Kwangtung
a	Li Choh-wang, Ag.	...	Hongkong
	Li Kwei-ch'en, A.	...	Jaochow, Kiangsi
s	Ling Tao-suen, A.	...	Foochow, Fukien
	Ling Yung-kwan, A.	...	Nanking, Kiangsu
a	Liu Peh-yang, F.	...	Anking, Anhwei
	Liu Shen-tsuen, A.	...	Hofei, Anhwei
s	Liu T'ien, Ag.	...	Dutch Borneo
	Liu T'ung-ch'i, Ag.	...	Chinghai, Chekiang
	Lo Wen-hao, A.	...	Nanking, Kiangsu
a	Lu Chen-shwen, A.	...	Tungyanghsien, Chekiang
	Lü Shi-p'ei, F.	...	Anking, Anhwei
a	Ma Ying-ren, A.	...	Nanking, Kiangsu
a	Meng Chung-hsing, F.	...	Wuhu, Anhwei
	Ni Kwan-ch'i, M.	...	Shanghai, Kiangsu
a	Pau Chi-liang, A.	...	Hohsien, Anhwei
s	P'an Chao-kw'en, A.	...	Ningpo, Chekiang
a	Pao Yuen, A.	...	Suiansien, Chekiang
	Shen Hsioh-li, Ag.	...	Chuchow, Anhwei
a	Shen Lih-ch'en, Ag.	...	Shanghai, Kiangsu
a	Shen T'ing-kw'en, M.	...	Ningpo, Chekiang
s	Shi Kwoh-ping, A.	...	Shanghai, Kiangsu
	Sie Ching-shen, A.	...	Hangchow, Chekiang
s	Siu Tseh-siang, E.	...	Paoking, Hunan
a	Sueh Chi-kao, A.	...	Wuweisien, Anhwei
	Swen Teh-heo, A.	...	Nunganhsien, Kirin
	T'an I, A.	...	Ningpo, Chekiang
a	T'an Ming-k'ai, A.	...	Hohsien, Anhwei
a	T'an Ming-tih, A.	...	Hohsien, Anhwei

	T'an Wei-chuin, A.	...	Shanghai, Kiangsu
	T'ang Pih, E.	...	Hwaiian, Kiangsu
s	T'ang Wei-teh, Ag.	...	Kiukiang, Kiangsi
	T'ao Yen-ch'iao, A.	...	Wuhu, Anhwei
	Ts'ai Lien-hsi, A.	...	Shanghai, Kiangsu
s	Tsiang Chieh-ming, E.	...	Paoking, Hunan
a	Tsiang Ying-cheo, E.	...	Wuhu, Anhwei
	Ts'ien Tai-hsing, A.	...	Ichang, Hupeh
a	Ts'ien T'ing, F.	...	Anking, Anhwei
s	Ts'ien Wei-tsung, A.	...	Taitsang, Kiangsu
	Ts'ü Ming-kao, A.	...	Anking, Ankwei
	Ts'ü Shao-wen, A.	...	Nanking, Kiangsu
	Ts'ü Teh-meo, F.	...	Anking, Anhwei
	T'u Wen-teh, A.	...	Tientsin, Chihli
	Wang Ch'ien-lung, A.	...	Nanking, Kiangsu
	Wang I-t'ing, A.	...	Ningpo, Chekiang
	Wang Kan-t'ing, A.	...	Ichang, Hupeh
a	Wang Ping-ts'iu, Ag.	...	Soochow, Kiangsu
a	Wang Ta-ch'ao, A.	...	Nanking, Kiangsu
	Wang Ting, A.	...	Nanking, Kiangsu
s	Wang Yen-ru, A.	...	Sinfeng, Kiangsu
	Wang Yuen-chih, A.	...	Tanhsien, Kiangsu
	Wei Hsioh-ren, A.	...	Nanking, Kiangsu
a	Wei P'en-sheo, A.	...	Yangchow, Kiangsu
	Wu Ch'ang-lü, E.	...	Sungkiang, Kiangsu
s	Wu Chi-an, Ag.	...	Hankow, Hupeh
s	Wu Tsi-kw'an, A.	...	Wuhu, Anhwei
a	Wu T'ung-loh, A.	...	Chichowfu, Anhwei
	Yang Chia-kw'en, A.	...	Shanghai, Kiangsu
	Yang P'ei-yuen, Ag.	...	Hongkong
a	Yang Ping-ling, A.	...	Tunghsien, Anhwei
	Yang Wang-hsui, A.	...	Suiansien, Anhwei
a	Yao Kwoh-liang, A.	...	Nanking, Kiangsu
a	Yih I-ming, A.	...	Siangtan, Hunan
a	Ying Ta-ch'en, A.	...	Hohsien, Anhwei
	Yu Wan-tsai, Ag.	...	Buitenzorz, Java
a	Yü Chien-hao, A.	...	Nanking, Kiangsu
a	Yü Hsiao-fang, A.	...	Hofei, Anhwei

Specials

	Ch'ang Tao-chih, A.	...	Nanking, Kiangsu
a	Cheo Hen-kwei, A.	...	Nanking, Kiangsu
a	Choh Ching-chi, Ag.	...	Chinkiang, Kiangsu
a	Feng Chuug-yen, A.	...	Soochow, Kiangsu
	Ho Ping, A.	...	Nanking, Kiangsu
	Ling Wei, A.	...	Nanking, Kiangsu
	Liu Pao-kw'en, A.	...	Laiyang, Shantung

Peh Nan-chi, Ag.	Korea
<i>s</i> Shen Yen-chung, A.	Nanking, Kiangsu
<i>a</i> Wang Shwen-ken, A.	Nanking, Kiangsu
Yang Chuin, A.	Chungking, Szechwan

THE SCHOOL OF EDUCATION

TEACHERS' HIGHER COURSE, JUNIOR COLLEGE*

Graduates, June 1919

Li Ching-hsuen	Siamen, Fukien
Lih Ch'ing-yuin	Sinyanghsien, Honan
Liu Chi-hsuen...	Wuhu, Anhwei
Liu Ch'i-rao	Peking, Chihli
Liu Ru	Weihwei, Honan
Ting Tso-ch'en	Ningpò, Chekiang

Second Year (13)

Li Ching-hsuen	Siamen, Fukien
Lih Ch'ing-yuin	Sinyanghsien, Honan
Liu Chi-hsuen...	Wuhu, Anhwei
Liu Chi-rao	Peking, Chihli
Liu Ru	Weihwei, Honan
Ting Tso-ch'en	Ningpo, Chekiang

First Year⁷⁷ (12)

Cheo Tsing-shan	Tsutsi, Chekiang
<i>s</i> Ching Wen-liang	Pukow, Kiangsu
<i>s</i> Chu Ts'ing-seng	Wusih, Kiangsu
<i>s</i> Chwan Chieh-ch'uin...	Swatow, Kwangtung
Hu Chen-kwoh	Hwaiian, Kiangsu
<i>s</i> Siu Tseh-siang...	Paoking, Hunan
T'ang Pih	Hwaiian, Kiangsu
<i>s</i> Tsiang Chioh-ming	Paoking, Hunan
<i>a</i> Tsiang Ying-cheo	Wuhu, Anhwei
Wu Ch'ang-lü...	Sungkiang, Kiangsu

*The graduate and students in the Teachers' Secondary Course, Middle School, are included in the register of Middle School students.

THE MIDDLE SCHOOL

Graduates, January 1919

Chang Ch'i-hwa	Chuchow, Anhwei
Chang Chi-wen	Laian, Anhwei
Chia Ch'en-chw'en	Kaoyuchow, Kiangsu
Ching Wen-liang	Kiangpu, Kiangsu
Chwan Ching-shen	Nantung, Kiangsu
Fang Tsi-ch'ing	Pukow, Kiangsu
Hsia Ren-chiai	Shaohsingfu, Chekiang
Kiang Shui-fang	Nantung, Kiangsu
K'o Siang-feng	Kweichi, Anhwei
Lao Yuen-p'ei	Changsha, Hunan
Li Teh-i...	Chuchow, Anhwei
Luh Ch'ang-lung	Nanking, Kiangsu
Ma Chien-chang	Luhhsien, Szechwan
P'en Shan-chü	Hofei, Anhwei
Shan Ken-hsien	Kaoan, Kiangsi
Shen Hsioh-chi	Hsiuning, Anhwei
Ts'ai Wei-fang	Nanking, Kiangsu
Ts'ao Kwoh-liang	Nanking, Kiangsu

Graduates, June 1919

Chao Shao-ting	Chinkiang, Kiangsu
Ch'en Hsiao-hsi	Nanking, Kiangsu
Ching Hsiao-hwei	Nanking, Kiangsu
Han Lih-wu	Chuchow, Kiangsu
Kiang Pen-kw'an	Nanking, Kiangsu
Li Ching-siang	Laian, Anhwei
Li Tseh-t'an	Chinkiang, Kiangsu
Li Yü-ching	Nanking, Kiangsu
Ling Ruh-ling...	Foochow, Fukien
Ling Shao-ying	Foochow, Fukien
*Liu Shao-ch'iu	Nanking, Kiangsu
Sie Ching-ch'u	Anking, Anhwei
Tseh Ch'i-seng	Chichowfu, Anhwei
Tsi Ching-hsing	Hohsien, Anhwei
Ts'ien Shwen-yu	Chingtan, Kiangsu
T'ung Teh-fuh...	Nanking, Kiangsu
Wang Hung-ch'i	Pukow, Kiangsu
Wang Tso-cheo	Nanking, Kiangsu

Fourth Year B (11)

Chang Ch'i-hwa	Chuchow, Anhwei
Chang Chi-wen	Laian, Anhwei

* Awarded Teachers' Secondary Course certificate.

s	Chu Chia-hsing	Henyang, Hunan
	Chwan Ching-shen	Nantung, Kiangsu
	Han Lih-wu	Chuchow, Kiangsu
	Hsia Ren-chiai	Shaohsingfu, Chekiang
	Kiang Shui-fang	Nantung, Kiangsu
	K'o Siang-feng	Kweichi, Anhwei
	Lan Sih-chi	Yungting, Hunan
	Lao Yuen-p'ei...	Changsha, Hunan
a	Leo Sz-hwai	Pukow, Kiangsu
	Li Teh-i	Chuchow, Anhwei
s	Li Tseh-t'an	Chinkiang, Kiangsu
	Luh Ch'ang-lung	Nanking, Kiangsu
	Ma Chien-chang	Luh sien, Szechwan
	P'en Shan-chii	Hofei, Anhwei
	Shan Ken-hsien	Kaoan, Kiangsi
	Shen Hsioh-chi	Hsiuning, Anhwei
	Shen Wen-hwa	Tungshiang, Chekiang
	Tsi Ching-hsing	Hohsien, Anhwei

Fourth Year A (11)

	Chao Shao-ting	Chinkiang, Kiangsu
	Ch'en Ching	Nanking, Kiangsu
	Ch'en Hsiao-lsü	Nanking, Kiangsu
	Chia Ch'en-chw'en	Kaoyuchow, Kiangsu
	Ching Hsiao-hwei	Nanking, Kiangsu
s	Chiu Ching-ling	Nanking, Kiangsu
	Fang Tsi-ch'ing	Pukow, Kiangsu
	Feng Sih-k'an	Shanghai, Kiangsu
s	Hwang Chen-liang	Tungan, Fukien
a	Hwang Ching-chu	Hsiamen, Fukien
	Kiang Pen-kw'an	Nanking, Kiangsu
	Li Ching-siang	Laiian, Anhwei
a	Li Yao-fu	Chinkiang, Kiangsu
	Li Yü-ching	Nanking, Kiangsu
	Ling Ruh-ling...	Foochow, Fukien
	Ling Shao-ying	Foochow, Fukien
a	Liu Ren-yüeh	Nanking, Kiangsu
	Liu Shao-ch'iu	Nanking, Kiangsu
	Sie Ching-ch'u	Anking, Anhwei
	Ts'ao Kwoh-liang	Luhö, Kiangsu
	Ts'ai Wei-fang	Nanking, Kiangsu
	Tseh Chi-seng...	Chichowfu, Anhwei
	Ts'ien Shwen-yu	Chingtan, Kiangsu
	T'ung Teh-fuh	Nanking, Kiangsu
	Wang Hung-ch'i	Pukow, Kiangsu
	Wang Tso-cheo	Nanking, Kiangsu
a	Wu Suen-san	Nanking, Kiangsu

	Wu Ts'ing-ch'uen	Hofei, Anhwei
	Yü Tso-ling	Nanking, Kiangsu

Third Year B (10)

	Chang Yuen-chieh	Chuchow, Anhwei
	Ch'en Chen-lsi	Nanking, Kiangsu
	Ch'en Yü-hwa...	Nanking, Kiangsu
	Fang Shen-yu	Machen, Hupeh
	Hu Shao-wen	Fengyang, Kiangsu
	Liu Ching-pan	Nanking, Kiangsu
	Liu Teh-shen	Tantu, Kiangsu
	P'u Kwan-tih	Nanking, Kiangsu
s	Ru Chi-mien	Soochow, Kiangsu
	T'an Kwan-tung	Chinkiang, Kiangsu
	Ts'ü Shih-seng	Nanking, Kiangsu
	Wang Ch'ang-fuh	Chinkiang, Kiangsu
s	Wang Fei-lsi	Kaoan, Kiangsu
	Wang Sz-ming	Tientsin, Chihli
	Wang Tso-mo	Nanking, Kiangsu
a	Wu Hsü-seng	Shanghai, Kiangsu

Third Year A (10)

	Chang Ping	Nanking, Kiangsu
	Ch'en Hwa-sing	Nanking, Kiangsu
a	Ch'en Ts'ing-lsien	Nanking, Kiangsu
	Chwan Chi-hsi	Nanking, Kiangsu
	Hu I-ch'en	Wusih, Kiangsu
	Hu Nan-heo	Shaochen, Chekiang
	Li Kwoh-piao	Nanking, Kiangsu
	Lu Pao-ying	Nanking, Kiangsu
s	Lu Tung-chi	Nanking, Kiangsu
s	Mao Teh-en	Nanking, Kiangsu
s	Mei Ping-fuh	Wukiang, Kiangsu
	Meng Chao-tan	Tientsin, Chihli
s	Pao Ching-fuh...	Chinkiang, Kiangsu
	P'ei Tung-lsuen	Korea
	Shen Chang-ts'ao	Wusih, Kiangsu
	Shen En-yung...	Yangchow, Kiangsu
	Ts'ü Chia-chih	Nanking, Kiangsu
	Ts'ü P'ei-chi	Chinkiang, Kiangsu
	Wang Ch'ang-lu	Fengyang, Anhwei
	Wang Tsi-hsing	Chinkiang, Kiangsu
	Wang Teh-ping	Chienshang, Anhwei
	Wu Ying-hwai...	Nanking, Kiangsu
	Yang Ch'ing-chi	Foochow, Fukien
	Yang Sih-chen	Nanking, Kiangsu

Second Year B (9)

Chen Chih-ch'en	Nanking, Kiangsu
Ch'en Ch'i-hwang	Nanking, Kiangsu
Cheo Shui-fang	Nanking, Kiangsu
<i>a</i> Fang P'en	Pukow, Kiangsu
<i>s</i> Kao Sheng-wu	Tantu, Kiangsu
Koh Han-ch'en	Chuchow, Anhwei
Kwoh Tsu-kwei	Nanking, Kiangsu
Kwoh Tsu-meo	Nanking, Kiangsu
<i>s</i> Meng Chung-hsing	Hofei, Anhwei
Muh Tao-hung	Anking, Anhwei
Ni Sheng-tsu	Nanking, Kiangsu
Shao Yu-lien	Shanghai, Kiangsu
Shi Fuh-ping	Chinkiang, Kiangsu
Wang Chw'en-hai	Nanking, Kiangsu
Wu Shan	Wuhu, Anhwei

Second Year A (9)

Chi Chia-ch'i	Chinkiang, Kiangsu
<i>s</i> Han Hsien-chang	Nanking, Kiangsu
Han Hsioh-ni	Changchow, Kiangsu
Ho Chieh-chi	Nanking, Kiangsu
Hung Hsiu-kw'en	Nanking, Kiangsu
Kao Ts'ung-sing	Nanking, Kiangsu
<i>a</i> Kw'an Yung-yao	Honolulu, Hawaii
<i>a</i> Ling Siao-puh	Hankow, Hupeh
<i>s</i> Mai Tsung-kwei	Kiangtu, Kiangsu
Tai Hung-teh	Chinkiang, Kiangsu
Tsü Nai-ch'ang	Wusih, Kiangsu
Wang Ts'ai-ken	Nanking, Kiangsu
Wang Ts'ai-liang	Nanking, Kiangsu
Wu Hung-ch'ing	Chinkiang, Kiangsu
Wu Ru-liang	Kiangtu, Kiangsu
Wu Wei-san	Nanking, Kiangsu

First Year B (8)

<i>s</i> Chang Kwoh-yen	Yangchow, Kiangsu
<i>a</i> Chang Tsung-ch'en	Shanghai, Kiangsu
Chao Ruh-t'an	Hsinghwa, Kiangsu
Chao Wei-liang	Nanking, Kiangsu
Chu Hwa	Showchow, Anhwei
Hsü Chw'an-pen	Chichow, Anhwei
Kao Ch'ao	Nanking, Kiangsu
<i>s</i> Liu Peh-yang	Anking, Anhwei
<i>s</i> Lu Shi-pei	Fengyang, Anhwei
<i>s</i> Ren Chwen-hsi	Korea

Sie Siang	Nanking, Kiangsu
<i>s</i> Siu Tsung-hen	Paoching, Hunan
Sueh Ch'ing-chw'en	Shuhsien, Kiangsu
<i>s</i> T'an Chia-kwen	Kwangtung
<i>s</i> T'an Ming-k'ai	Anking, Anhwei
T'an Shan-chi	Chichow, Anhwei
Ts'ao Tsu-ping	Hsiuling, Anhwei
<i>s</i> Ts'ien T'ing	Sungchow, Anhwei
Ts'ü Ch'i-sheo	Hsiuling, Anhwei
<i>s</i> Ts'ü Chia-hwa	Nanking, Kiangsu
<i>s</i> Ts'ü Kwoh-chi	Tantu, Kiangsu
<i>a</i> Tu Kwan-yung	Nanking, Kiangsu
Wang Sih-ling	Nanking, Kiangsu
<i>s</i> Wang Ying-liung	Kiangtu, Kiangsu
<i>s</i> Wen Tai-cheng	Korea
Wu Sz-lung	Changchow, Kiangsu
<i>s</i> Wu Tao-kung	Nanking, Kiangsu
Yü Chao-ming	Nanking, Kiangsu
Yuen Kai-chi	Shanghai, Kiangsu

First Year A (8)

Ch'en Liang-tung	Nanking, Kiangsu
<i>a</i> Ch'en Yeh-hsiang	Nanking, Kiangsu
Ch'en Yü-k'an	Nanking, Kiangsu
Ching Chien-leo	Szecken, Korea
<i>a</i> Chung Shi-hwa	Chinkiang, Kiangsu
Fang Sih-ling	Kaifeng, Honan
Ho Wei-tsung	Icheng, Kiangsu
Hsiao Ts'ing-yuin	Chinkiang, Kiangsu
Hwa Sz-tai	Kiangtu, Kiangsu
<i>s</i> Kao Hsia-chang	Nanking, Kiangsu
<i>s</i> Kiang Pen-sing	Nanking, Kiangsu
<i>a</i> Ku Shi-chwen	Nanking, Kiangsu
<i>s</i> Kw'ei Pu-chung	Shih-tai, Anhwei
Li Tseh-yü	Chinkiang, Kiangsu
<i>a</i> Liang Chen-sung	Wuhu, Anhwei
Liang Yen-meo	Nanking, Kiangsu
Ling Hsien-chang	Taichow, Kiangsu
Liu Eu-luh	Nanking, Kiangsu
Liu Shen-pao	Nanking, Kiangsu
Lu Chw'an-ling	Chowchiakoo, Honan
<i>a</i> Luh Sheo-ch'en	Nanking, Kiangsu
Ma Chi-shen	Taihsing, Kiangsu
<i>s</i> Mao Wei-cheo	Nanking, Kiangsu
Peh Ts'ing-teh	Nanking, Kiangsu
<i>s</i> Ting Ts'iang-lung	Wutsing, Kiangsu
<i>s</i> Ts'ien Tsuen-t'ien	Taichow, Kiangsu

s Ts'ü Ren-chieh	Tantu, Kiangsu
s Ts'ui Chi-ying...	Taiping, Anhwei
s Wang Hsiu-wu	Tantu, Kiangsu
s Wang Lai-an	Shaohsing, Chekiang
Wu Fang-ling	Chishui, Shantung
s Wu Rung-shan	Tientsao, Anhwei
Yeh Chia-kwei	Nanking, Kiangsu

THE MODEL SCHOOL

HIGHER PRIMARY

Graduates, February 1919

Chang Sheo-i	Tientsin, Chihli
Chang Wang-lwan	Tantu, Anhwei
Hsiao Kwoh-ts'iang	Nanking, Kiangsu
Hwang Shui-lwen	Nanking, Kiangsu
Ku Yen-wu	Chuchow, Anhwei
Lan Pao-yuin	Yangchow, Kiangsu
Li Fah-chen	Nanking, Kiangsu
Li Teh-ching	Nanking, Kiangsu
Wang Li-seng	Kwapu, Kiangsu
Wang Yung-ts'ing	Nanking, Kiangsu
Wen Tso-cheo	Nanking, Kiangsu
Yü Sueh-chung	Tsienshan, Anhwei

Graduates, June 1919

Ch'en Twen-ru	Panyang, Kiangsi
Chu Ih-teh	Kweichi, Anhwei
Hwang Feng-ts'iang	Tantu, Kiangsu
Liu Wen-ching	Kiangpu, Kiangsu
Ma Chien-kan	Luchow, Szechwan
Ma Wen-yuen	Nanking, Kiangsu
Shen Tsen-hu	Hofei, Anhwei
Ts'iang Chia-liu	Nanking, Kiangsu
Ts'ü Shao-wu	Hwangmei, Hupeh
Tu Ch'ing-chen	Fengchen, Kiangsi
Wang Ch'ang-i	Fengyang, Anhwei
Wang Tsu-ying	Wuhu, Anhwei

Third Year B (7)

Chang Sheo-i	Tientsin, Chihli
Chang Wang-lwan	Tantu, Anhwei
Hsiao Kwoh-ts'iang	Nanking, Kiangsu
Hwang Shui-lwen	Nanking, Kiangsu

Ku Yen-wu	Chuchow, Anhwei
Lan Pao-yuin	Yangchow, Kiangsu
Li Fah-chen	Nanking, Kiangsu
a Li Teh-ching	Nanking, Kiangsu
Tsiang Chia-liu	Nanking, Kiangsu
Wang Li-seng	Kwapu, Kiangsu
a Wang Yung-ts'ing	Nanking, Kiangsu
a Yü Sueh-chung	Tsienshan, Anhwei

Third Year A (7)

Chang Kwoh-yuen	Yangchow, Kiangsu
s Chang Shu-ping	Suehsien, Anhwei
s Chang Ts'i-chien	Suehsien, Anhwei
a Chang Yuen-chuin	Nanking, Kiangsu
a Chen Chi-chien	Kwangtung
s Chen Wen-hwang	Nanking, Kiangsu
Chen Ya	Luhoh, Kiangsu
s Ch'en Ch'ao-shen	Itu, Hupeh
s Ch'en Pao-chen	Tantu, Kiangsu
Ch'en Twen-ru	Panyang, Kiangsi
Ching Shen-ken	Seoul, Korea
Chu Ih-teh	Kweichi, Anhwei
Han Chi-ch'en	Lungkan, Korea
Hwang Feng-ts'iang	Tantu, Kiangsu
a Ken Ken	Paoying, Kiangsu
Kiang Puh-hsiu	Nauhsuchou, Anhwei
a Li P'ei-ling	Tungtsingchen, Kiangsu
Liu Teh-lu	Nanking, Kiangsu
Liu Wen-ching	Kiangpu, Kiangsu
Ma Chien-kan	Luchow, Szechwan
Ma Wen-yuen	Nanking, Kiangsu
a Mi Pao-yu	Chinkiang, Kiangsu
Shen Tsen-ku	Hofei, Anhwei
a Shi Fuh-pih	Shanghai, Kiangsu
a Teng Luh	Kwangchow, Kwangtung
a Ts'ao Wen-sih	Shanghai, Kiangsu
Ts'ü Shao-wu	Hwangmei, Hupeh
T'u Ch'ing-chen	Fengchen, Kiangsi
Wang Ch'ang-i	Fengyang, Anhwei
Wang Hung-hsing	Nanking, Kiangsu
Wang I-shui	Nanking, Kiangsu
Wang Shen-tsu	Kaoyu, Kiangsu
Wang Tsu-ying	Wuhu, Anhwei
Wan Tso-cheo	Nanking, Kiangsu
a Wen Ts'ung-sing	Paoying, Kiangsu
a Yü P'ei-hwa	Wuhu, Anhwei

Second Year B (6)

s	Chang Yeh	Kweichi, Anhwei
	Chen Ming-wen	Laian, Anhwei
	Ch'en Sung-feng	Shanghai, Kiangsu
a	Ch'en Sz-sing	Nanking, Kiangsu
a	Ch'en Tao-hwang	Tsaoyang, Hupeh
	Ch'en Teh-lu	Kaoyu, Kiangsu
a	Ch'en Yang-chieh	Shanghai, Kiangsu
s	Cheo Chiu-p'ei	Nanking, Kiangsu
a	Hwang Chi-ch'en	Nanking, Kiangsu
	Hwang Shuh-ren	Tsingkiang, Kiangsi
	Hwang Shui-ts'ai	Nanking, Kiangsu
s	Kiang Ping-nan	Tangyang, Kiangsu
	Li Hsien-ling	Ichang, Hupeh
	Li Hsuen	Kiukiang, Kiangsu
s	Li T'ai-hsing	Seoul, Korea
s	Li Tao-yuen	Kaoyu, Kiangsu
a	Liang Kwen-chuin	Nanking, Kiangsu
a	Liu Sz-ling	Nanking, Kiangsu
	Rao Tsung-han	Shanghai, Kiangsu
s	Ren Ting-liang	Nanking, Kiangsu
	Swen Chung-i	Shaohsien, Anhwei
	Swen Hsiao-chi	Pingan, Korea
	Teng Ch'en-tung	Singhwei, Kwangtung
	Ting Shui-kw'ei	Chinkiang, Kiangsu
	Ts'ü Chi-hsuen	Tientsin, Chihli
	Wu Chen	Tatung, Anhwei
a	Wu Pao-yung	Minghsien, Fukien

Second Year A (6)

s	Chang Chen-sheo	Laian, Anhwei
a	Chang Chia-wang	Wuhu, Anhwei
s	Chang Kwei-yung	Kweichi, Anhwei
a	Chen Chang	Tungchen, Anhwei
a	Chen Chi	Taiping, Anhwei
s	Ch'en Ching-seng	Kiangtu, Kiangsu
a	Ch'en Shui-ling	Luanhsien, Chihli
	Ch'i Shao-chia	Laian, Anhwei
	Ching Hung-wei	Pukow, Kiangsu
a	Ho Ch'en-mei	Taishing, Kiangsu
a	Hsü Hai-ru	Nanking, Kiangsu
a	Li Chien	Showchow, Anhwei
s	Li Hsing-feng	Korea
s	Li T'ai-ih	Nanking, Kiangsu

s	Liu Shen-hsing	Hofei, Anhwei
s	Liu Teh-ch'ang	Tantu, Kiangsu
s	Pan Chi-tan	Wuhsien, Kiangsu
s	Pien Ching-tsai	Yangchow, Anhwei
	Shan Chi-hsien	Kaoan, Kiangsi
	Shan Siang-hsien	Kaoan, Kiangsi
a	Sie Hoh-t'ung	Yangchow, Kiangsu
	Tai Chw'en-feng	Hwaiyuan, Anhwei
	Tai Shen-hsi	Nanking, Kiangsu
s	T'an Kwan-tung	Hsiangshan, Kwangtung
	Ting Wen-ling	Pukow, Kiangsu
a	Ts'ü Chen-yen	Nanking, Kiangsu
a	Ts'ü Ping-hen	Chinkiang, Kiangsu
	Wang Tsing-fah	Nanking, Kiangsu
	Wang Meng-lan	Nanking, Kiangsu
	Wu Lien-seng	Hofei, Anhwei
	Yang Teh-yi	Yushan, Kiangsi
s	Yeh Hsing-seng	Nanking, Kiangsu
s	Yeh Ts'iang-fah	Luhö, Kiangsu
a	Ying Nai-tuh	Chuchow, Anhwei
s	Yü Chi	Shaoying, Chekiang
	Yü Lih-chen	Laian, Anhwei
s	Yü Tsi-tsai	Tsienshan, Anhwei

First Year B (5)

s	Chang Chao-luan	Taihsing, Kiangsu
	Chang Chien	Nanking, Kiangsu
s	Chang Tseh-shen	Chuhsien, Anhwei
	Ch'en I-kung	Nanking, Kiangsu
a	Ch'en Ru-sing	Fushan, Korea
	Ch'en Teh-ch'ing	Kaoyu, Kiangsu
	Cheo Ch'ang-chw'en	Nanking, Kiangsu
a	Ching Yoh-shan	Miyang, Korea
	Chwan Chi-wen	Nanking, Kiangsu
	Fang Ch'en-yuen	Hsiakwan, Kiangsu
	Hwang Ti-yao	Shanghai, Kiangsu
	Kiang Wen-hsien	Nanking, Kiangsu
	Kwoh Tsu-ching	Nanking, Kiangsu
s	Liao Kwoh-hao	Yungting, Fukien
a	Lib Hung	Nanking, Kiangsu
	Peh Ch'ao-ting	Shaohsien, Anhwei
	Shao Kwoh-ch'iao	Fengyang, Anhwei
s	Shao Yu-shan	Minghsien, Fukien
	Shi Chen-shen	Soochow, Kiangsu
	Shi Fuh-ch'uen	Luhö, Kiangsu

Shih Kwan-meng	Nanking, Kiangsu
Ting Wen-hwei	Pukow, Kiangsu
Ts'ü Shih-kwan	Hwaiian, Kiangsu
s Tu Yü-ling	Tientsin, Chihli
a Wu Wen-lien	Ishing, Kiangsu
s Yang Pao-seng	Lingho, Chihli
Yang Tseh-ling	Tsanhsien, Chihli
s Yao Han-ming...	Nanking, Kiangsu

First Year A (5)

s Chang Ch'en-lwa	Nanking, Kiangsu
Chang Keh-wen	Amoy, Fukien
s Chao Ru-i	Sianghsienhsien, Hunan
Ch'en Chen-tung	Tungchen, Anhwei
Cheo Ching-chiai	Nanhsuchou, Anhwei
Cheo Ts'ung-tao	Chinghsien, Chekiang
a Fang Hwang	Nanking, Kiangsu
Fuh Yung-ching	Tanshan, Kiangsu
s Ho Sz-wen	Paoyuin, Kiangsu
a Ho Tung-tu	Nanking, Kiangsu
s I Keh-nai	Changsha, Hunan
s I Keh-ta...	Changsha, Hunan
Kwei Tsi-hsing	Szyang, Kiangsu
s Lai Tsu-hsieh	Yungtinghsien, Fukien
s Li Chi-ping	Yunglienhsien, Chihli
s Liu Chen	Hofei, Anhwei
s Liu P'ei...	Hofei, Anhwei
s Lo Hsi-tang	Hofei, Anhwei
s T'an Hwa-hwei	Siangshan, Kwangtung
s Tseh Tü-tsai	Chinghsien, Anhwei
Tseo Han-mien	Chienlihsien, Hupeh
Tsiang Mei-teh	Nanking, Kiangsu
s Ts'ü Yung-chiah	Siangchen, Anhwei
s Ts'ü Yung-tsung	Siangchen, Anhwei
s T'u Chung-yao...	Hsiaokanhsien, Hupeh
a Wu Chang	Ishing, Kiangsu
Yoh Kwei-ling...	Hwangpei, Hupeh
Yü Twen-chu	Tsienshan, Anhwei

LOWER PRIMARY

Graduates, June 1919

Liang Chen-tung	Siangshan, Kwangtung
Liu Tao-wen	Paoying, Kiangsu
Meng Han-ting	Nanking, Kiangsu

Ren Ting-lao	Nanking, Kiangsu
Shi Nan-shan	Soochow, Kiangsu
T'an Yu-sing	Ningpo, Chekiang
Ts'ai I-an	Siuling, Kwangtung
Yuen Yu-shu	Shaohsien, Chekiang

Fourth Year (4)

Chang Keh-wu...	Singapore
Ch'en Chen-ho...	Foochow, Fukien
a Kw'an Hwa-ch'i	Nanking, Kiangsu
Liang Chen-tung	Siangshan, Kwangtung
Liu Tao-wen	Paoying, Kiangsu
Lu Ts'ung-t'ung	Shanghai, Kiangsu
Meng Han-ting	Nanking, Kiangsu
Ren Ting-hao	Nanking, Kiangsu
Shi Nan-shan	Soochow, Kiangsu
T'an Yu-sing	Ningpo, Chekiang
Ts'ai I-an	Siuling, Kwangtung
Yuen Yu-shu	Shaohsien, Chekiang

Third Year (3)

Chang, Aurora...	Nanking, Kiangsu
s Chang Chia-yang	Nanking, Kiangsu
Cheo Ts'ung-chi	Nanking, Kiangsu
s Li Ch'en-kan	Nanking, Kiangsu
s Liu Shw'an-tsuen	Amoy, Fukien
Liu Tao-li	Nanking, Kiangsu
Swen Mei-yüeh	Wuhu, Anhwei
s Yang Chen-tsung	Hwangyen, Chekiang
Yao Chi-tao	Wuhu, Anhwei

Second Year (2)

Chang, Wesley	Luhö, Kiangsu
Ch'en Ren-tsuen	Nanking, Kiangsu
Hung, Clara	Nanking, Kiangsu
s Tu Hsiang-nan	Ningkwö, Anhwei
a Tu Mo-cheo	Nanking, Kiangsu

First Year (1)

Ch'en Teh-tsuen	Nanking, Kiangsu
s Kao, John	Nanking, Kiangsu
s Siang Chi-tien...	Laihsien, Chekiang

KINDERGARTEN

s	Chang, Margaret	Nanking, Kiangsu
	Chao Hwa-mei...	Nanking, Kiangsu
	Ch'en Chen-ts'iang	Foochow, Fukien
s	Cheo, John	Nanking, Kiangsu
a	Cheo Kung-liang	Nanking, Kiangsu
s	Cheo, Lois	Nanking, Kiangsu
s	Chia Pao-chen...	Nanking, Kiangsu
a	Hu An-loh	Nanking, Kiangsu
	Hu Hwei-chen...	Yungting, Fukien
	Hung, Laura	Nanking, Kiangsu
	Kiang Pen-ming	Nanking, Kiangsu
s	Kiang Yuen-yüeh	Tsimo, Shantung
s	Liu, Bennett	Tantu, Kiangsu
s	Liu Kwang-hsi	Nanking, Kiangsu
a	Liu Pen-li	Nanking, Kiangsu
	T'ao Hung	Nanking, Kiangsu
a	Wei Kwan-pao	Nanking, Kiangsu
a	Wei Ts'iu-ling...	Nanking, Kiangsu
	Wu T'ien-pao	Nanking, Kiangsu
s	Wu T'ien-yü	Nanking, Kiangsu

DEPARTMENT OF MISSIONARY TRAINING

	Abbott, Miss Lillie F.	...	F. C. M. S.
	Argelander, Mr. Frank A.	...	Methodist, North
	Beare, Mr. Thomas J.	...	Free Methodist
	Beare, Mrs.	...	Free Methodist
	Boone, Miss Muriel M.	...	Presbyterian, North
	*Bovell, Miss Mabel E.	...	A. B. F. M. S.
	*Brodbeck, Miss Emma L.	...	A. B. F. M. S.
	Brown, Miss Lydia E.	...	Ginling College
	Brown, Miss Marjorie B.	...	Independent
	*Brown, Dr. Robert E.	...	Methodist, North
	*Brown, Mrs.	...	Methodist, North
	Chace, Miss Cora	...	Presbyterian, North
	Clemons, Mrs. Harry	...	Presbyterian, North
	Danuser, Miss M. E.	...	Y. W. C. A.
	Davis, Rev. Ward W.	...	Presbyterian, North

* Left before 1 February 1919.

Abbreviations:—

- A. B. F. M. S.=American Baptist Foreign Mission Society
 C. M. S.=Church Missionary Society
 F. C. M. S.=Foreign Christian Missionary Society
 S. D. A.=Seventh Day Adventist
 Y. W. C. A.=Young Woman's Christian Association

	Davis, Mrs.	Presbyterian, North
	Day, Miss Isabella	Presbyterian, North
	Dieter, Miss Margaret	...	F. C. M. S.	
	Dubs, Rev. Homer H.	...	United Evangelical	
	Dubs, Mrs.	...	United Evangelical	
	Duff, Miss Helen	...	Independent	
	Du Pee, Miss Nina	...	F. C. M. S.	
	Durfee, Miss M. Elizabeth	...	Y. W. C. A.	
	Froom, Rev. Leroy E.	...	S. D. A.	
	Graham, Mr. Harold L.	...	S. D. A.	
	Graham, Mrs.	...	S. D. A.	
	Gundlach, Miss Ida	...	Ginling College	
	Hill, Miss Ella A.	...	A. B. F. M. S.	
	Holroyd, Rev. Ben	...	F. C. M. S.	
	Irving, Miss Emma S.	...	A. B. F. M. S.	
	Jacobson, Mr. Gerlard A.	...	Independent	
	Jacobson, Mrs.	...	Independent	
	Lawrence, Miss Jane...	...	A. B. F. M. S.	
	Legge, Miss Della Gertrude	...	F. C. M. S.	
	Lewis, Mrs. Mary L.	...	Presbyteriau, North	
	Leyda, Miss Maude L.	...	United Evangelical	
	Loucks, Miss Blanche	...	Methodist, North	
	Maiden, Miss Daisy V.	...	Church of God	
	Marx, Mr. Edwin	...	F. C. M. S.	
	Marx, Mrs.	...	F. C. M. S.	
	Nash, Miss Elizabeth D.	...	A. B. F. M. S.	
	Pearson, Miss Georgianna W.	...	A. B. F. M. S.	
	Ritter, Mrs. H. C.	...	Methodist, South	
	Robinson, Miss Faye H.	...	Methodist, North	
	Russell, Miss Maud	...	Y. W. C. A.	
	Sargent, Dr. Clara	...	Y. W. C. A.	
	Scharffenberg, Mr. W. A.	...	S. D. A.	
	Scharffenberg, Mrs.	...	S. D. A.	
	Smawley, Miss Eva L.	...	Presbyterian, North	
	Smith, Rev. C. Stanley	...	Presbyterian, North	
	Smith, Miss Joy	...	Methodist, North	
	Stewart, Mr. W. R.	...	Y. M. C. A.	
	*Therolf, Miss Frances	...	A. B. F. M. S.	
	Toothaker, Rev. Frank	...	Methodist, North	
	Toothaker, Mrs.	...	Methodist, North	
	Treman, Mr. Robert C.	...	Methodist, North	
	Varley, Miss Elizabeth M.	...	C. M. S.	
	Walker, Miss Jennie	...	Methodist, North	
	Weigel, Mr. W. H., Jr.	...	University of Nanking	
	Weigel, Mrs.	...	University of Nanking	
	Wilds, Miss Mamie C.	...	Presbyterian, North	

UNIVERSITY HOSPITAL

THE NURSES' TRAINING SCHOOL

Chang Ren-ho...	...	Suchen, Anhwei
*Ch'en Siang-ts'u	...	Hwangmei, Hupeh
Cheo Wang-ih...	...	Siyang, Kiangsu
Chu Hwa-ting...	...	Nanking, Kiangsu
Hsiung Yun-shen	...	Kiukiang, Kiangsi
Hwang Chi-ch'en	...	Nanking, Kiangsu
Hwang Shao-chi	...	Nanking, Kiangsu
*Kwan Yao-hwa	...	Manchuria
Lai I-seng	...	Nanking, Kiangsu
*Li Chuh-seng	...	Hangchow, Chekiang
*Li Tao-lih	...	Kiukiang, Kiangsi
*Liu Hung-chi	...	Nanking, Kiangsu
*Lu Fang-ch'i	...	Nanking, Kiangsu
Lu Hsiu-ming	...	Wuwei, Anhwei
*Mei Ching-chu	...	Hwangmei, Hupeh
T'an Ch'ang-hwai	...	Kiukiang, Kiangsi
T'an Shau-tsuen	...	Tantu, Anhwei
Ts'ai Teh-en	...	Suhsien, Kiangsu
*Ts'ao Tsi-rob	...	Nanking, Kiangsu
Tsing Sung-ling	...	Nanking, Kiangsu
T'ung Shu-teh...	...	Chühsien, Anhwei
*Wang Hsiu-tsoli	...	Nanking, Kiangsu
Wang Tsing	...	Soochow, Kiangsu
Wang Wang-fuh	...	Siyang, Kiangsu
Wang Wang-luh	...	Siyang, Kiangsu
Wang Yung-seng	...	Chühsien, Anhwei
Wu Shwan-ling	...	Kwanchi, Hupeh
Yang Pao-lo	...	Suhsien, Kiangsu
Yü Ts'iang-yü...	...	Nanking, Kiangsu

* Present during half year ending 31 December 1918, but not later

TOTAL REGISTRATION, 1918-1919

Autumn Semester

College of Agriculture and Forestry	41
Agricultural students	16	
Forestry students	25	
College of Arts	50
Junior College	173
School of Education, Teachers' Higher Course	13
Middle School	145
Model School	155
Higher Primary	121	
Lower Primary	22	
Kindergarten	12	
Language School	71
In residence	47	
Correspondence course	24	
Nurses' Training School	18
				666
Less duplication	13
Total number of students	653

Spring Semester

College of Agriculture and Forestry	68
Agricultural students	17	
Forestry students	25	
Short course in sericulture	26	
College of Arts	41
Junior College	161
School of Education, Teachers' Higher Course	18
Middle School	167
Model School	156
Higher Primary	115	
Lower Primary	27	
Kindergarten	14	
Language School	91
In residence	67	
Correspondence course	24	
Nurses' Training School	21
				723
Less duplication	18
Total number of students	705

INDEX OF STUDENTS

This index includes all except Language School students, who are listed on pages 30, 31. The classification is on the basis of the autumn semester 1918-1919, except for students who were enrolled only during the spring semester. The names of the latter are preceded by the letter "s," and they are listed according to the spring semester classification. The letter "a" precedes the names of students who were present during the autumn semester only.

The numbers used indicate the years in the university course above the kindergarten; i.e., 1-4, Lower Primary; 5-7, Higher Primary; 8-11, Middle School; 12, 13, Junior College; 14-16, Senior Colleges. "A" or "B" following the numbers from 5 to 11 indicates the A or B grades in the Higher Primary and Middle Schools.

The other abbreviations refer to the classification in the Register of Students on pages 9-30. These abbreviations are as follows:

- CAG.=College of Agriculture and Forestry, agricultural student
 CAgf.=College of Agriculture and Forestry, forestry student
 CA.=College of Arts
 JAg.=Junior College, agricultural student
 JA.=Junior College, arts student
 JE.=Junior College, student in Teachers' Higher Course
 JF.=Junior College, forestry student
 JM.=Junior College, medical student
 MS.=Middle School
 HP.=Model School, Higher Primary
 LP.=Model School, Lower Primary
 K.=Kindergarten
 N.=Nurses' Training School
 Ser.=Short course in Sericulture
 Sp.=Special student

INDEX OF STUDENTS.

Cha Ch'ien	CA	16	Chao Shao-ting	MS	11 A
Chang Chen-chia	Ser		Chao Shi-tseh	JA	13
Chang, Aurora	LP	3	Chao T'ung-lien	JA	13
s Chang Chao-luan	HP	5 B	Chao Wei-liang	MS	8 B
s Chang Chen-sheo	HP	6 A	a Chen Chang	HP	6 A
s Chang Ch'ien-hwa	HP	5 A	a Chen Ch'ang-hung	CA	14
Chang Chi-wen	MS	11 B	a Chen Chi	HP	6 A
Chang Ch'i hwa	MS	11 B	a Chen Chi-chien	HP	7 A
a Chang Chia-wang	HP	6 A	Chen Chih-ch'ien	MS	9 B
s Chang Chia-yang	LP	3	a Chen Ch'ing-chung	JAg	13
Chang Chien	HP	5 B	Chen Heo-hwai	CA	14
Chang Chuin-t'u	JA	13	Chen Ming-wen	HP	6 B
Chang Chw'an-ching	CAGf	16	Chen Wang-fu	Ser	
Chang Hai-hsing	Ser		s Chen Wen-hwang	HP	7 A
Chang Hai-shan	CAG	15	Chen Ya	HP	7 A
a Chang K'eh-kung	JA	12	Ch'ien Ch'ang-shen	JA	12
Chang Keh-wen	HP	5 A	Ch'ien Ch'ang-wei	JA	12
Chang Keh-wu	LP	4	s Ch'ien Ch'ao-shen	HP	7 A
s Chang Kwei-yung	HP	6 A	Ch'ien Chen-ho	LP	4
s Chang Kwoh-yen	MS	8 B	Ch'ien Chen-hsi	MS	10 B
Chang Kwoh-yuen	HP	7 A	Ch'ien Chen-ts'iang	K	
Chang Li-ch'ao	CA	15	Ch'ien Chen-tung	HP	5 A
s Chang, Margaret	K		Ch'ien Chi-shan	JA	13
s Chang Men-p'ing	JA	12	a Ch'ien Ch'i-hsioh	JA	12
Chang Nien-yuen	JAg	13	Ch'ien Ch'i-hwang	MS	9 B
Chang P'ei-nan	JF	12	Ch'ien Ching	MS	11 A
Chang Pih-shan	JA	12	s Ch'ien Ching-seng	HP	6 A
Chang Ping	MS	10 A	s Ch'ien Feng-hwai	JA	12
a Chang Ren-chieh	JA	12	a Ch'ien Fuh-en	JAg	13
Chang Ren-ho	N		Ch'ien Hsiao-hsiu	MS	11 A
Chang Sheo-i	HP	7 B	Ch'ien Hsioh-i	CA	15
s Chang Shu-ping	HP	7 A	Ch'ien Hwa-sing	MS	10 A
Chang Sih-yü	JAg	13	Ch'ien I-kung	HP	5 B
Chang Sing-fu	CA	14	Ch'ien I-tsu	CA	15
s Chang Tseh-shen	HP	5 B	Ch'ien K'eh-ching	JM	13
s Chang Tsi-chien	HP	7 A	a Ch'ien Kwan-chao	JAg	12
Chang Tso-wen	JAg	13	Ch'ien Kwan-shwen	CAG	16
a Chang Tsu-tsuen	JA	12	Ch'ien Kwei-chi	CAG	14
a Chang Tsung-ch'ien	MS	8 B	Ch'ien Liang-tung	MS	8 A
Chang T'ung-wu	CAGf	16	s Ch'ien Pao-chen	HP	7 A
Chang Wang-lwan	HP	7 B	Ch'ien Ren-tsuen	LP	2
Chang Wei-chen	CAGf	16	a Ch'ien Ru-sing	HP	5 B
a Chang Wen-ching	JA	13	a Ch'ien Shan-chi	JAg	12
Chang, Wesley	LP	2	a Ch'ien Shui-ling	HP	6 A
s Chang Yeh	HP	6 B	Ch'ien Shwen-yuin	JAg	12
Chang Yuen-chieh	MS	10 B	Ch'ien Siang-ts'u	N	
a Chang Yuen-chuin	HP	7 A	Ch'ien Sung-feng	HP	6 B
a Ch'ang P'ei-ling	JA	12	a Ch'ien Sz-sing	HP	6 B
Ch'ang Tao-chih	JA	sp	a Ch'ien Tao-hwang	HP	6 B
Chao Chi-kw'ei	Ser		Ch'ien Teh-ch'ing	HP	5 B
Chao Hwa-mei	K		Ch'ien Teh-lu	HP	6 B
Chao Hwei-san	Ser		Ch'ien Teh-tsuen	LP	1
Chao Lien-kw'ei	JA	13	Ch'ien Tsing-seng	JA	13
Chao Lih-shan	JA	13	a Ch'ien Ts'ing-hsien	MS	10 A
a Chao Ren-hwa	JA	12	s Ch'ien Tsu-kw'ei	JF	13
s Chao Ru-i	HP	5 A	Ch'ien Twen-ru	HP	7 A
Chao Ruh-t'an	MS	8 B	a Ch'ien Yang-chieh	HP	7 B

a	Ch'en Yeh-hsiang	MS	8 A	Chung Wei-ch'en	JA	13		
	Ch'en Yen-ch'ao	JA	12	a	Chung Wen-kw'ei	JA	13	
	Ch'en Yü-hwa	MS	10 B		Chwan Chi-hsi	MS	10 A	
	Ch'en Yü-k'an	MS	8 A		Chwan Chi-wen	HP	5 B	
	Ch'en Yüin-swen	JA	12	s	Chwan Chieh-ch'ui'n	JE	12	
	Cheo Ch'ang-chw'en	HP	5 B		Chwan Ching-shen	MS	11 B	
	Cheo Chia-shu	CA	14	a	Fang Ch'en-chuin	CA	16	
	Cheo Ching-chiai	HP	5 A		Fang Ch'en-yuen	HP	5 B	
s	Cheo Chiu-p'ei	HP	6 B		Fang Hsuin	JA	13	
a	Cheo Hen-kw'ei	JA	sp	a	Fang Hwang	HP	5 A	
	Cheo Hsiao-ch'ien	CA	14		Fang Ih-chung	CAGf	16	
	Cheo Hsioh-ru	JA	12	a	Fang P'en	MS	9 B	
s	Cheo, John	K			Fang Shen-yu	MS	10 B	
a	Chen K'ai	JA	12		Fang Tsen	a	JA	12
a	Cheo Kung-liang	K			Fang Sih-ling	Ser		
	Cheo Lien-yuen	Ser			Fang Tsi-yuin	MS	8 A	
s	Cheo, Lois	K			Fang Tsi-ch'ing	CA	15	
a	Cheo Ming-hwei	JAg	13		Fang Tsing-yen	MS	11 A	
	Cheo Ru-hen	JA	12	a	Feng Chung-yen	JA	sp	
a	Cheo Shui-chang	CA	16		Feng Hsuin	CA	15	
	Cheo Shui-fang	MS	9 B		Feng Ru-pao	Ser		
	Chen Ts'ing-shan	JE	12		Feng Rui	CAG	15	
	Cheo Tsung-chi	LP	3		Feng Sih-k'an	MS	11 A	
	Cheo Ts'ung-tao	HP	5 A		Feng Yü-hen	Ser		
	Cheo Wang-ih	N			Fuh Yung-ching	HP	5 A	
s	Cheo Yung-nien	JA	12		Han Chi-ch'ien	HP	7 A	
	Chi Chia-ch'i	MS	9 A		Han Hsien-chang	MS	9 A	
	Chi Shao-chia	HP	6 A	s	Han Hsioh-ni	MS	9 A	
	Chia Ch'en-chw'en	MS	11 A		Han Lih-wu	MS	11 B	
s	Chia Pao-chen	K		a	Ho Ch'en-mei	HP	6 A	
	Ching Chien-heo	MS	8 A		Ho Chi	Ser		
	Ching Hsiao-hwei	MS	11 A		Ho Chieh-chi	MS	9 A	
a	Ching Hsuen-hsi	CA	14		Ho Lih-pen	JA	12	
	Ching Hung-wei	HP	6 A		Ho Ping	JA	sp	
	Ching Shan-chi	JA	12	s	Ho Sz-wen	HP	5 A	
	Ching Shen-ken	HP	7 A	a	Ho Tao-seng	JA	12	
s	Ching Wen-liang	JE	12	a	Ho Tung-tu	HP	5 A	
a	Ching Yoh-shan	HP	5 B		Ho Wei-tsung	MS	8 A	
s	Chiu Ching-ling	MS	11 A	s	Hsia Ch'ang-chen	JA	13	
s	Ch'iu Er-t'ang	JF	12	s	Hsia Ch'ang-ken	JA	13	
	Choh Ching-chi	JAg	sp		Hsia Ren-chiai	MS	11 B	
s	Chu Chi-ch'ang	CA	14		Hsiao Kwoh-ts'iang	HP	7 B	
	Chu Chia-chi	CA	15		Hsiao Ts'ing-yuin	MS	8 A	
s	Chu Chia-hsing	Ser	11 B		Hsing I-ch'ü	CA	14	
	Chu Chieh-yuen	JA	12		Hsiung Ch'iang-hsiü	JA	13	
a	Chu Chwan-t'ing	JA	12	a	Hsiung Ch'ü-fang	JM	12	
	Chu Feng-chang	JA	13		Hsiung Ta-ch'uen	JA	12	
	Chu Fu-t'ang	JA	13		Hsiung Yüin-shen	N		
	Chu Hwa	MS	8 B		Hsü Cheh	CA	14	
	Chu Hwa-ting	N			Hsü Chw'an-pen	MS	8 B	
	Chu Ih-teh	HP	7 A	a	Hsü Hai-ru	HP	6 A	
	Chu Pao-ts'u	CA	14	a	Hsü Ying	JA	12	
	Chu Teh-fang	CA	14		Hsuen Ch'ang-yuin	JA	13	
s	Chu Ts'ing-seng	JE	12	a	Hu An-loh	K		
	Chuh En-seng	CA	14		Hu Chen-kw'oh	JE	12	
	Chung Chien-yuen	JA	13					
a	Chung Shi-hwa	MS	8 A					

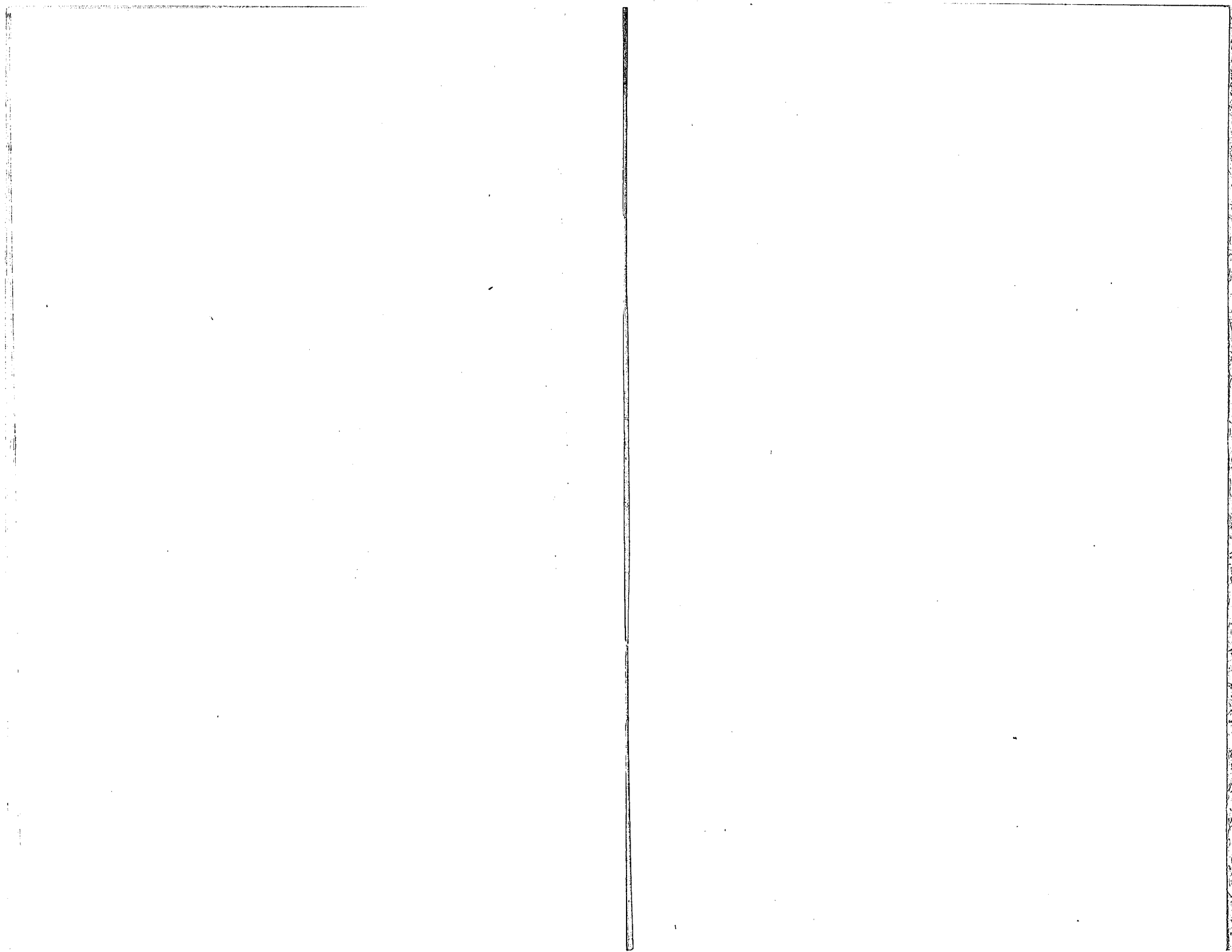
a	Hu Chia-chi	JAg	12	a	Ku Shi-chwen	MS	8 A
	Hu Hwei-chen	K			Ku Yen-wu	HP	7 B
	Hu I-ch'en	MS	10 A		Kuh Yang	JA	12
	Hu Nan-heo	MS	10 A	a	Kung Tsi-siang	JA	12
	Hu Shao-wen	MS	10 B		Kung Wei-lung	Ser	
	Hu Sih-san	JA	12		Kwan Yao-hwa	N	
	Hu Toh	JAg	13	a	Kw'an Hwa-ch'i	LP	4
	Hung, Clara	LP	2	s	Kw'an Ming-kw'en	JM	12
	Hung Hsing-peh	JA	12		Kw'an Sung-ling	CAG	15
	Hung Hsiu-kw'en	MS	9 A	s	Kw'an Yao-kw'en	JA	12
	Hung, Laura	K		a	Kw'an Yung-yao	MS	9 A
	Hwa Peh-hsiung	CAG	15	s	Kw'ei Pu-chung	MS	8 A
	Hwa Sz-tah	MS	8 A		Kwei Tsi-hsing	HP	5 A
	Hwa Ying-siang	JAg	13	s	Kw'oh Shao-hsien	JAg	12
s	Hwang Chen-liang	MS	11 A		Kw'oh Tsu-ching	HP	5 B
a	Hwang Chi-ch'en	HP	6 B		Kw'oh Tsu-hwei	MS	9 B
	Hwang Chi-ch'en	N			Kw'oh Tsu-meo	MS	9 B
a	Hwang Ching-chu	MS	11 A		Lai I-seng	N	
	Hwang Ching-wei	Ser			Lai Ruh-hsui'n	CAG	15
	Hwang Feng-ts'iang	HP	7 A	s	Lai Tsu-hsieh	HP	5 A
	Hwang Hsuen	JAg	13		Lan Pao-liu	CA	15
	Hwang Shao-chi	N			Lan Pao-yuin	HP	7 B
	Hwang Shuh-ren	HP	6 B		Lan Sih-chi	MS	11 B
	Hwang Shui-lwen	HP	7 B		Lao Yuen-p'ei	MS	11 B
	Hwang Shui-ts'ai	HP	6 B		Leng Pao-seng	CA	15
	Hwang Ti-yao	HP	5 B	a	Leo Sz-hwai	MS	11 B
	Hwang T'ien-yü	CAG	16		Li Ch'en-kan	LP	3
	Hwang Tsung	CAGf	16	s	Li Chi-ping	HP	5 A
	Hwang Yü	JM	12		Li Chi-t'ung	CAGf	14
s	I Keh-nai	HP	5 A	a	Li Chien	HP	6 A
s	I Keh-ta	HP	5 A		Li Ching-hsuen	JE	13
	K'an Han	JF	12		Li Ching-siang	MS	11 A
	Kao Ch'ao	MS	8 B		Li Ch'ing-ling	CA	14
	Kao En-p'ei	JA	12	a	Li Choh-wang	JAg	12
s	Kao Hsia-chang	MS	8 A		Li Chuh-seng	N	
s	Kao, John	LP	1		Li Chuin-k'ang	CAG	16
	Kao Ping-fang	CAGf	16		Li Chw'en-t'ang	Ser	
s	Kao Sheng-wu	MS	9 B		Li Fah-chen	HP	7 B
	Kao Ts'ung-sing	MS	9 A		Li Hsiang-ping	CAGf	15
a	Ken Ken	HP	7 A		Li Hsien-ling	HP	6 B
	Ken Tso-ling	CAGf	16	s	Li Hsing-feng	HP	6 A
a	Kiang Hung-ch'i	CA	16		Li Hsuen	HP	6 B
	Kiang Pen-kung	JA	12		Li Hung-teh	CA	15
	Kiang Pen-kw'an	MS	11 A		Li Kwei-ch'en	JA	12
	Kiang Pen-ming	K			Li Kw'oh-piao	MS	10 A
s	Kiang Pen-sing	MS	8 A		Li Kw'oh-tung	CA	15
s	Kiang Ping-nan	HP	6 B	a	Li P'ei-ling	HP	7 A
	Kiang Puh-hsiu	HP	7 A		Li Sheo-hen	JAg	13
	Kiang Shui-fang	MS	11 B		Li Shwen-ch'ing	CAGf	16
	Kiang Wang-ch'ing	Ser			Li Tai-fang	CAGf	16
	Kiang Wen-hsien	HP	5 B	s	Li T'ai-hsing	HP	6 B
s	Kiang Yuen-yüeh	K		s	Li T'ai-ih	HP	6 A
	K'o Siang-feng	MS	11 B		Li Tao-lih	N	
a	K'o Ta-yung	CA	16	s	Li Tao-yuen	HP	6 B
	Koh Han-ch'en	MS	9 B	a	Li Teh-ching	HP	7 B
					Li Teh-i	MS	11 B

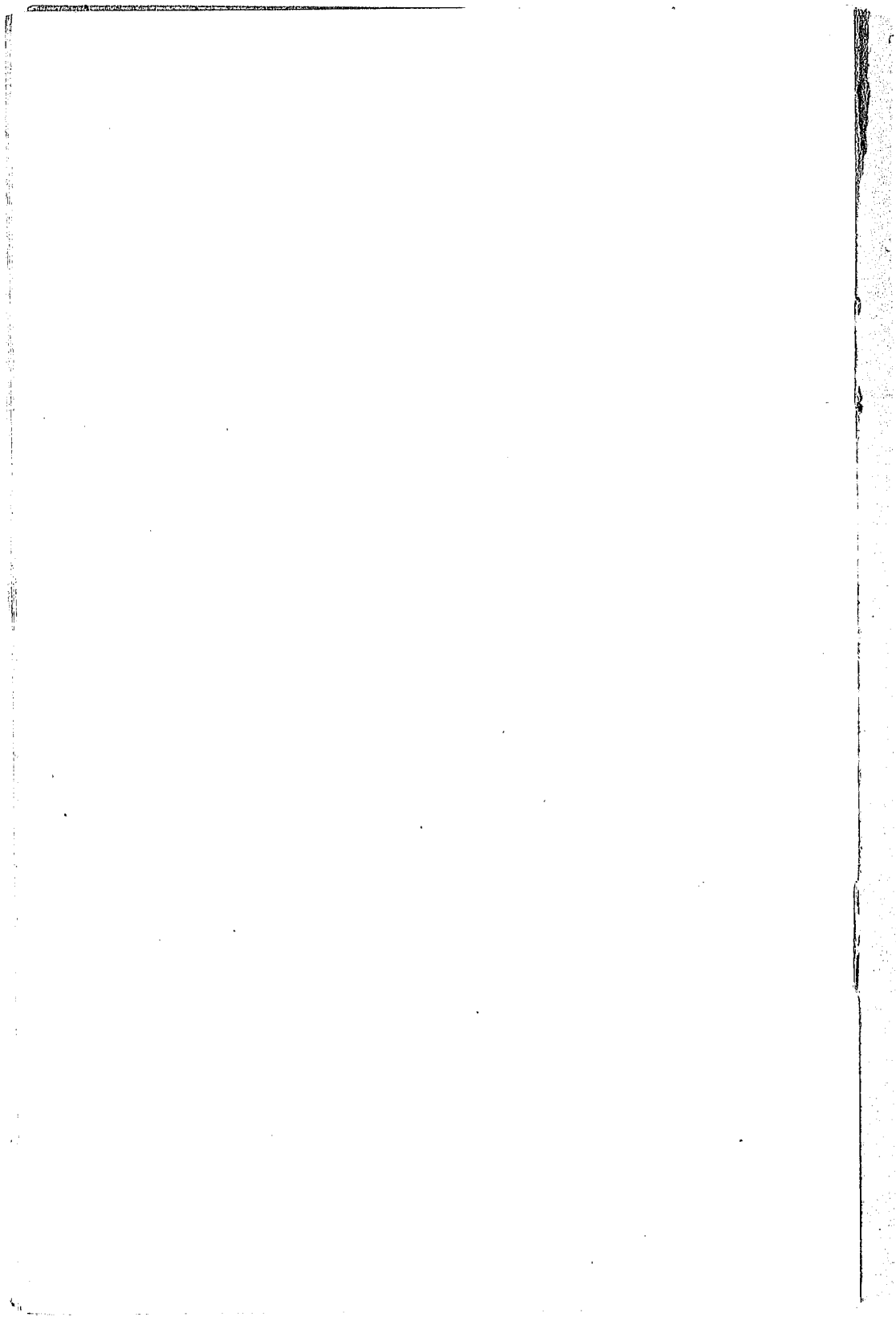
s	Li Tseh-t'an	MS	11 B	s	Liu T'ien	JAg	12
	Li Tseh-yü	MS	8 A		Liu T'ing-fan	JA	13
a	Li Yao-fu	MS	11 A		Liu T'ing-wei	JA	13
	Li Yen-ts'eh	CAGf	16		Liu Ts'ung-pen	CA	15
	Li Yü-ching	MS	11 A		Liu T'ung-ch'i	JAg	12
	Li Yung	CAGf	16		Liu Wen-ching	HP	7 A
a	Liang Chen-sung	MS	8 A	s	Lo Hsi-tang	HP	5 A
	Liang Chen-tung	LP	4	a	Lo Liang-chu	JA	13
a	Liang Kw'en-chuin	HP	6 B		Lo Wen-hao	JA	12
	Liang Yen-meo	MS	8 A	a	Lu Chen-shwen	JA	12
s	Liao Kwoh-hao	HP	5 B		Lu Chw'an-ling	MS	8 A
	Lih Ch'ing-yuin	JE	13		Lu Fang-ch'i	N	
a	Lih Hung	HP	5 B		Lu Hsiu-ming	N	
	Ling Chen-shen	CA	15		Lu Pao-ying	MS	10 A
	Ling Hsien-chang	MS	8 A		Lu P'ei-chang	CAGf	16
	Ling Kan	JF	13	s	Lu Shi-pei	MS	8 B
	Ling Ruh-ling	MS	11 A		Lu Ts'ung-t'ung	LP	4
	Ling Shao-ying	MS	11 A	s	Lu Tung-chi	MS	10 A
	Ling Shen-hwa	JA	13		Lü Shi-p'ei	JF	12
a	Ling Siao-puh	MS	9 A		Luh Ch'ang-lung	MS	11 B
s	Ling Tao-suen	JA	12	a	Luh Sheo-ch'en	MS	8 A
	Ling Wei	JA	sp	s	Luh Tsung-i	JA	13
	Ling Yung-kwan	JA	12		Ma Ch'en-ih	Ser	
s	Liu, Bennett	K			Ma Chi-shen	MS	8 A
s	Liu Chen	HP	5 A		Ma Chien-chang	MS	11 B
	Liu Chen-yü	JA	13		Ma Chien-kan	HP	7 A
	Liu Chi-hsuen	JE	13		Ma Hung-yü	Ser	
	Liu Chi-rao	JE	13		Ma Wen-yuen	HP	7 A
	Liu Ching-pan	MS	10 B	a	Ma Ying-ren	JA	12
	Liu Choh-hsi (Nan-ts'eh)	JAg	13	s	Mai Tsung-kwei	MS	9 A
	Liu En-luh	MS	8 A	s	Mao Teh-en	MS	10 A
	Liu Hung-chi	N		s	Mao Wei-cheo	MS	8 A
s	Liu Kwang-hsi	K			Mao Yung	CAG	15
	Liu Kwoh-chuin	CA	14		Mei Ching-chu	N	
	Liu Kwoh-yung	CA	14		Mei Ping-fuh	MS	10 A
	Liu Nai-ch'en	JA	13	s	Meng Chao-tan	MS	10 A
	Liu Pao-kw'en	JA	sp	a	Meng Chung-hsing	JF	12
a	Liu Peh-yang	JF	12		Meng Chung-hsing	MS	9 B
s	Liu Peh-yang	MS	8 B	s	Meng Han-ting	LP	4
s	Liu P'ei	HP	5 A		Meng Han-ting	HP	7 A
a	Liu Pen-li	K		a	Mi Pao-yu	MS	9 B
a	Liu Ping-yang	JAg	13		Muh Tao-hung	MS	9 B
	Liu Ren-chieh	JA	13		Ni Kwan-ch'i	JM	12
a	Liu Ren-yüeh	MS	11 A		Ni Sheng-tsu	MS	9 B
	Liu Ru	JE	13		Ni Wen-sing	CAGf	16
	Liu Shao-ch'iu	MS	11 A		Pan Chi-liang	JA	12
s	Liu Shen-hsing	HP	6 A	a	Pan Chi-tan	HP	6 A
	Liu Shen-pao	MS	8 A	s	P'an Chao-kw'en	JA	12
	Liu Shen-tsuen	JA	12	s	P'an Chien-ch'ing	CA	16
a	Liu Shi-shi	CA	14		P'an Hsioh-ts'an	CAGf	16
s	Liu Shw'an-tsuen	LP	3		P'an Shi-lwen	JA	13
a	Liu Sz-ling	HP	6 B		P'an Wen-fuh	CAGf	16
	Liu Tao-li	LP	3		Pao Ching-fuh	MS	10 A
	Liu Tao-wen	LP	4	s	Pao Hwa	CA	14
s	Liu Teh-ch'ang	HP	6 A	a	Pao Yuen	JA	12
	Liu Teh-lu	HP	7 A				
	Liu Teh-shen	MS	10 B				

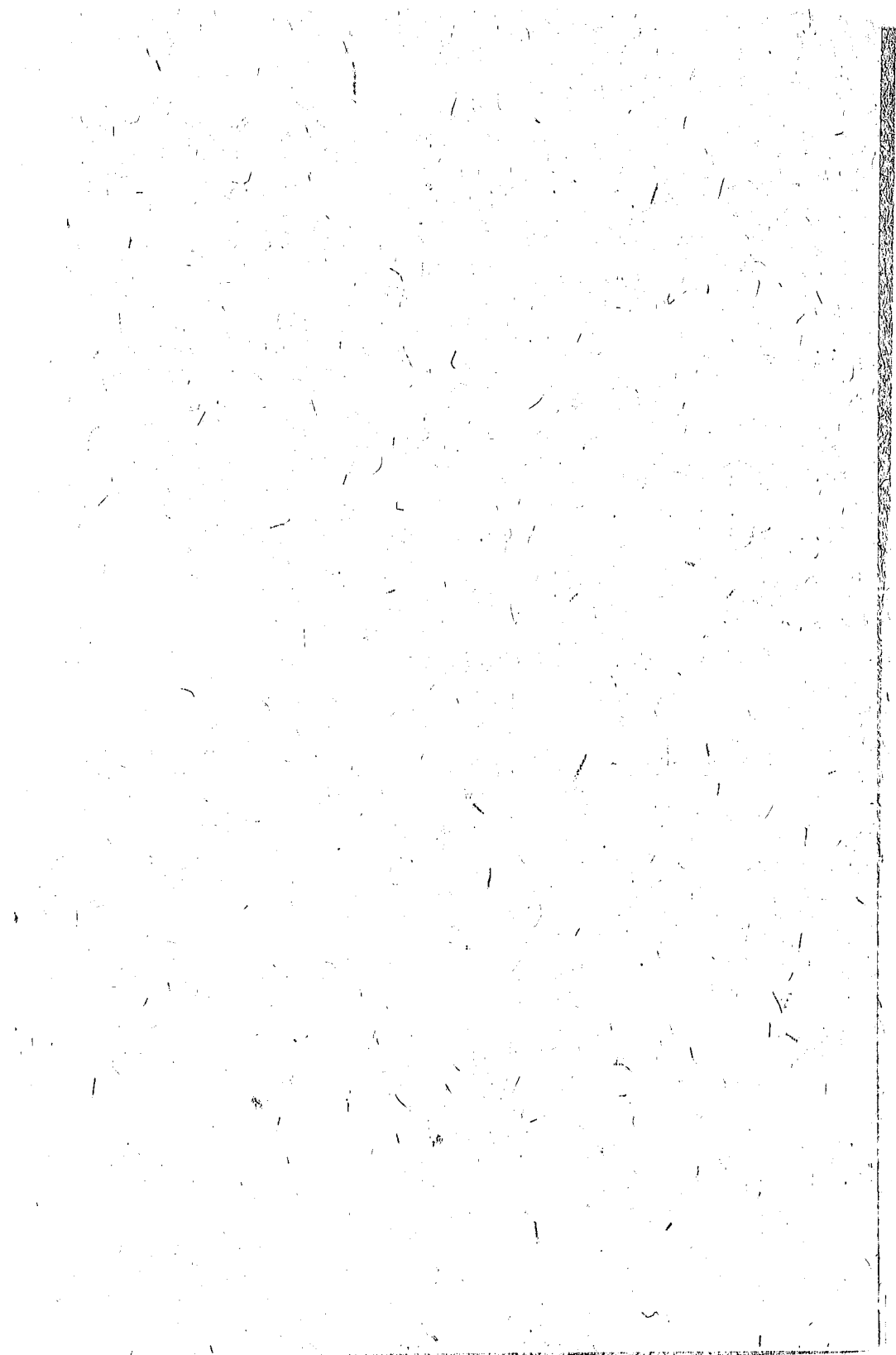
	Peh Ch'ao-ting	HP	5 B	Swen Hsiao-chi	HP	6 B	
	Peh Nan-chi	JAg	sp	Swen Mei-yüeh	LP	3	
	Peh Ts'ing-teh	MS	8 A	Swen Teh-heo	JA	12	
	P'ei Tung-hsuen	MS	10 A				
a	P'en Ch'ang-ling	CA	sp	Tai Chw'en-feng	HP	6 A	
	P'en K'eh-chung	CAGf	16	Tai Hung-teh	MS	9 A	
	P'en Shan-chü	MS	11 B	Tai Shen-hsi	HP	6 A	
s	P'ien Ching-tsai	HP	6 A	Tai Tsung-yüeh	CAGf	16	
	P'u Kwan-tih	MS	10 B	T'an Ch'ang-hwai	N		
				T'an Ch'ü-yü	CAG	15	
	Rao Ch'ing-ming	Ser		T'an Chia-kwen	MS	8 B	
	Rao Tsung-han	HP	6 B	T'an Hwa-hwei	HP	5 A	
s	Ren Chwen-hsi	MS	8 B	T'an I	JA	12	
	Ren Ting-hao	LP	4	T'an Kwan-tung	MS	10 B	
s	Ren Ting-liang	HP	6 B	T'an Kwan-tung	HP	6 A	
s	Ru Chi-mien	MS	10 B	T'an Kwan-tung	JA	12	
				a	T'an Ming-k'ai	MS	8 B
	Seng Yung-ch'ing	CA	14	s	T'an Ming-k'ai	JA	12
	Shan Chi-hsien	HP	6 A	a	T'an Ming-tih	JA	12
	Shan Ken-hsien	MS	11 B		T'an Shan-chi	MS	8 B
	Shan Siang-hsien	HP	6 A		T'an Shan-tsuen	N	
	Shao Kwoh-ch'iao	HP	5 B		T'an Ts'ai-chuin	JAg	13
	Shao Yu-lien	MS	9 B		T'an Wei-chuin	JA	12
s	Shao Yu-shan	HP	5 B		T'an Yu-sing	LP	4
	Shen Chang-ts'ao	MS	10 A		T'ang Meo-ru	JA	13
	Shen Ch'i-tung	JA	13		T'ang Pih	JE	12
	Shen En-yung	MS	10 A	s	T'ang Wei-teh	JAg	12
	Shen Hsioh-chi	MS	11 B		T'ao Hung	K	
	Shen Hsioh-li	JAg	12		T'ao Yen-ch'iao	JA	12
	Shen I-ch'ien	CAGf	16		Teng Ch'en-tung	HP	6 B
a	Shen Lih-ch'en	JAg	12	a	Teng Chw'an-ting	CAGf	15
	Shen Sheo-tsuen	JAg	13		Teng Luh	HP	7 A
a	Shen T'ing-kw'en	JM	12		Teng Pan-suen	CA	14
	Shen Tsen-ku	HP	7 A		Ting Ming-chien	JAg	13
	Shen Ts'i-hwei	JAg	13		Ting Shui-kw'ei	HP	6 B
	Shen Wen-hwa	MS	11 B	s	Ting Ts'iang-lung	MS	8 A
s	Shen Yen-chung	JA	sp		Ting Tso-ch'en	JE	13
	Shi Chen-shen	HP	5 B		Ting Wen-hwei	HP	5 B
	Shi Fuh-ch'uen	HP	5 B		Ting Wen-ling	HP	6 A
a	Shi Fuh-pih	P	7 A	a	Ts'ai Chang-ru	JA	13
	Shi Fuh-ping	MS	9 B		Ts'ai I-an	LP	4
a	Shi Kwei-ling	JAg	13		Ts'ai Lien-hsi	JA	12
s	Shi Kwoh-ping	JA	12		Ts'ai Mo-seng	CA	15
	Shi Nan-shan	LP	4		Ts'ai Teh-en	N	
	Shih Kwan-meng	HP	5 B		Ts'ai Wei-fang	MS	11 A
s	Siang Chi-tien	LP	1		Ts'ao Han-feng	JAg	13
	Sie Ch'en-hsuei	JA	13		Ts'ao Kwoh-liang	MS	11 A
	Sie Ching-ch'u	MS	11 A		Ts'ao Tsi-roh	N	
	Sie Ching-shen	JA	12		Ts'ao Tsu-ping	MS	8 B
a	Sic Hoh-t'ung	HP	6 A	a	Ts'ao Wen-sih	HP	7 A
	Sie Siang	MS	8 B		Tsch Chi-seng	MS	11 A
s	Siu Tseh-siang	Ser	JE	s	Tsch Tü-tsai	HP	5 A
s	Siu Tsung-hen	MS	8 B		Tseo Han-mien	HP	5 A
a	Sueh Chi-kao	JA	12		Tsi Ching-hsing	MS	11 B
	Sueh Ch'ing-chw'en	MS	8 B		Tsiang Chia-liu	HP	7 B
	Sueh Choh-tung	JA	13	s	Tsiang Chioh-ming	JE	12
	Swen Chung-i	HP	6 B	a	Tsiang Hwei-ying	JAg	13
					Tsiang Lien	CA	14

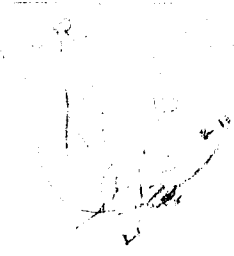
Tsiang Mei-teh	HP	5 A	Wang Ch'en-shui	Ser	
Tsiang Ts'ung-li	JM	13	Wang Ch'ing-kung	CA	16
a Tsiang Ying-cheo	JE	12	Wang Chw'en-hai	MS	9 B
Ts'ien Shwen-yu	MS	11 A	Wang Chw'en-hwa	JAg	13
Ts'ien Tai-hsing	JA	12	s Wang Fei-hsi	MS	10 B
a Ts'ien T'ing	JF	12	Wang Hai-yuin	CA	14
s Ts'ien T'ing	MS	8 B	Wang Han-peh	CA	14
s Ts'ien Tsuen-t'ien	MS	8 A	a Wang Hsien-hsing	CA	sp
s Ts'ien Wei-tsung	JA	12	Wang Hsiu-tsoh	N	
Tsing Sung-ling	N		s Wang Hsiu-wu	MS	8 A
Ts'ü Chen-k'en	CAGf	16	Wang Hung-ch'i	MS	11 A
a Ts'ü Chen-yen	HP	6 A	Wang Hung-hsing	HP	7 A
Ts'ü Chi-hsuen	HP	6 B	Wang I-shui	HP	7 A
Ts'ü Ch'i-sheo	MS	8 B	Wang I-t'ing	JA	12
Ts'ü Chia-chih	MS	10 A	Wang Kan-t'ing	JA	12
s Ts'ü Chia-hwa	MS	8 B	Wang K'an-heo	CA	14
Ts'ü Ching-tsai	Ser		Wang Kwoh-ting	CAGf	15
Ts'ü Hwai	CAGf	16	s Wang Lai-an	MS	8 A
s Ts'ü Kwoh-chi	MS	8 B	Wang Li-seng	HP	7 B
Ts'ü Ming-kao	JA	12	a Wang Ping-ts'iu	JAg	12
Ts'ü Nai-ch'ang	MS	9 A	Wang Meng-lan	HP	6 A
Ts'ü P'ei-chi	MS	10 A	Wang P'u-ying	Ser	
a Ts'ü Ping-hao	CA	15	a Wang Shao-tswen	JAg	13
a Ts'ü Ping-hen	HP	6 A	Wang Shen-tsu	HP	7 A
a Ts'ü Ren-chieh	MS	8 A	a Wang Shwen-ken	JA	sp
Ts'ü Shao-wen	JA	12	Wang Sih-ling	MS	8 B
Ts'ü Shao-wu	HP	7 A	Wang Sz-ming	MS	10 B
Ts'ü Shih-kwan	HP	5 B	a Wang Ta-ch'ao	JA	12
Ts'ü Shih-seng	MS	10 B	Wang Ta-o	JA	13
Ts'ü Teh-meo	JF	12	Wang Teh-ping	MS	10 A
Ts'ü Tsi-hwei	Ser		Wang Ting	JA	12
Ts'ü Tsing	CAGf	15	Wang Ts'ai-ken	MS	9 A
s Ts'ü Yung-chiah	HP	5 A	Wang Ts'ai-liang	MS	9 A
s Ts'ü Yung-tsung	HP	5 A	Wang Tsi-hsing	MS	10 A
s Ts'ui Chi-ying	MS	8 A	Wang Tsing	N	
a Ts'ui Ts'iang-chih	CA	16	Wang Tsing-fah	HP	6 A
s Tu Hsiang-nan	LP	2	Wang Tso-cheo	MS	11 A
a Tu Hsing-hwa	JA	13	Wang Tso-mo	MS	10 B
a Tu Kwan-yung	MS	8 B	Wang Tsu-ying	HP	7 A
a Tu Mo-cheo	LP	2	s Wang Ying-ling	MS	8 B
Tu Yang-chen	Ser		a Wang Yung-ts'ing	HP	7 B
s Tu Yü-ling	HP	5 B	Wang Wang-fuh	N	
T'u Ch'ing-chen	HP	7 A	Wang Wang-luh	N	
s T'u Chung-yao	HP	5 A	Wang Wen-t'ien	CA	14
T'u Wen-teh	JA	12	s Wang Yen-ru	JA	12
Tung Chi-hsioh	CA	14	Wang Yuen-chih	JA	12
Tung Hwa	CAGf	16	Wang Yung-seng	N	
T'ung Shu-teh	N		Wei Hsioh-ren	JA	12
T'ung Teh-fuh	MS	11 A	a Wei Kwan-pao	K	
			a Wei P'en-sheo	JA	12
Wang An-nan	Ser		a Wei Ts'iu-ling	K	
Wang Ch'ang-fuh	MS	10 B	Wei Wen-han	JA	13
Wang Ch'ang-hu	MS	10 A	s Wen Tai-cheng	MS	8 B
Wang Ch'ang-i	HP	7 A	Wen Tso-cheo	HP	7 A
Wang Ch'en-chi	Ser		a Wen Ts'ung-sing	HP	7 A
Wang Ch'en-fang	CA	14	Wen Wen-kwan	CAGf	15
Wang Ch'en-lung	JA	12	a Wu Chang	HP	5 A

Wu Ch'ang-lü	JE	12	a Yang Kwan-hsia	JA	13
Wu Chen	HP	6 B	Yang Pao-lo	N	
s Wu Chi-an	JAg	12	s Yang Pao-seng	HP	5 B
Wu Choh-ming	CAGf	16	Yang P'ei-yuen	JAg	12
Wu Chw'an-hsiao	JA	13	a Yang Ping-ling	JA	12
Wu Fang-ling	MS	8 A	Yang Sih-chen	MS	10 A
a Wu Hsü-seng	MS	10 B	Yang Teh-yi	HP	6 A
Wu Hung-ch'ing	MS	9 A	Yang Tseh-ling	HP	5 B
Wu I-mei	JAg	13	Yang Wang-hsuin	JA	12
Wu Lien-seng	HP	6 A	Yao Chi-tao	LP	3
a Wu Pao-yung	HP	6 B	s Yao Han-ming	HP	5 B
Wu Ru-ling	MS	9 A	a Yao Kwoh-liang	JA	12
s Wu Rung-shan	MS	8 A	Yeh Chia-kwei	MS	8 A
Wu Shan	MS	9 B	s Yeh Hsing-seng	HP	6 A
Wu Shi-shui	CA	14	s Yeh Ts'iang-fah	HP	6 A
Wu Shwan-ling	N		a Yih I-ming	JA	12
a Wu Suen-san	MS	11 A	a Ying Nai-tuh	HP	6 A
Wu Sz-lung	MS	8 B	a Ying Ta-ch'en	JA	12
s Wu Tao-Kung	MS	8 B	Yoh Kwei-ling	HP	5 A
Wu T'ien-pao	K		Yu Wan-tsai	JAg	12
s Wu T'ien-yü	K		Yü Chao-ming	MS	8 B
s Wu Tsi-kw'an	JA	12	s Yü Chi	HP	6 A
Wu Ts'ing-ch'uen	MS	11 A	a Yü Chien-hao	JA	12
a Wu T'ung-loh	JA	12	a Yü Hsiao-fang	JA	12
a Wu Wei-san	MS	9 A	Yü Lih-chen	HP	6 A
Wu Wen-an	CAGf	15	a Yü P'ei-hwa	HP	7 A
Wu Wen-chen	JAg	13	a Yü Sueh-chung	HP	7 B
a Wu Wen-lien	HP	5 B	s Yü Tsi-tsai	HP	6 A
Wu Ying-hwai	MS	10 A	Yü Ts'iang-yü	N	
			Yü Tso-ling	MS	11 A
s Yang Chen-tsung	LP	3	Yü Twen-chu	HP	5 A
Yang Chia-kw'en	JA	12	Yü Twen-ho	JA	13
Yang Ch'ing-chi	MS	10 A	Yü Yu-ren	JA	13
Yang Chuin	JA	sp	Yuen Kai-chi	MS	8 B
Yang Hwei	CAGf	16	Yuen Yu-shu	LP	4









9/2

REGISTRY OF COLLEGE STUDENTS, UNIVERSITY OF NANKING

<u>Year</u>	<u>Spring</u>	<u>Fall</u>	<u>Graduates</u>
1910	29	30	-
1911	48	33	4
1912	56	55	2
1913	47	31	6
1914	37	55	22
1915	60	100	9
1916	98	116	9
1917	126	218	13
1918	223	277	12
1919	262	265	49

(Note: The above figures do not include Medical School students, from 1912 to 1916, at which time there were 14 undergraduates and 12 graduated.

These figures also do not include normal school students until the autumn of 1918.)

GRADUATES FROM NANKING UNIVERSITY

1896	7	1903	4
1897	1	1904	15
1898	-	1905	5
1899	5	1906	5
1900	2	1907	9
1901	-	1908	14
1902	4	1909	9

REGISTRY OF STUDENTS OF NANKING UNIVERSITY AND THE UNIVERSITY
 OF NANKING, FROM INAUGURATION OF NANKING UNIVERSITY
 TO TIME OF UNION, 1910, AND FROM TIME OF
 UNION TO DATE, 1919.

<u>Year</u>	<u>No. of Students</u>	<u>Year</u>	<u>No. of Students</u>
1889	11	1910	432
1890	33	1911	442
1891	35	1912	501
1892	39	1913	434
1893	40	1914	543
1894	58	1915	544
1895	61	1916	522
1896	70	1917	521
1897	75	1918	780
1898	190	1919	705
1899	129		
1900	115		
1901	128		
1902	154		
1903	110		
1904	122		
1905	152		
1906	278		
1907	255		
1908	262		
1909	353		
1910	432		

SCHOOLS SENDING STUDENTS TO THE UNIVERSITY OF NANKING. FALL 1919.

90 Schools.

ANHWEI PROVINCE

Anking	1st Prov. M.S.	2
	W. M. S.	
	Prov. Agri. Sch.	5
	St. Paul's H.S.	1
Chuchow	Academy	1
Hweichow	Tsung I M.S.	2
Tungchen	M.S.	1
Wuhu	GENERAL Hosp.	1
	Union Academy	5
	*St. James H.S.	1

CHEKIANG PROVINCE

Nangchow	An Ding M.S.	1
	Christian Coll & M.S.	3
	Wayland Acad	2
	*Y.M.C.A.	1
Kashing	Middle School	2
Ningpo	Baptist Acad	4
	Eng. Meth. Coll.	3
	Pres. Acad	1
	Yao Zih Coll	1
Wenchow	Methodist Coll	2
	Jui An M.S.	1

CHIHLI PROVINCE

Peking	Agri. & For Sci	2
Shuntehfu	*Hugh O'Niell Jr. Acad	1
Tientsin	Nan Kai M.S.	13

FUKIEN PROVINCE

Foochow	Anglo-Chinese Coll	3
	Christian Coll	1
Tingchow	7th Prov. M.S.	2

HUNAN PROVINCE

Chengsha	*Commercial H.S.	1
Chenchow	New China M.S.	1
Siangtan	J.D. Wells' H.S.	3

HUPPEH PROVINCE

Kingchow	Seminary	1
Tungshan	M.S.	1
Wuchang	*Trinity M.S.	1
	*Wesley Coll H.S.	1

KIANGSI PROVINCE

Kiukiang	M.S.	1
	Wm. NAST Coll.	6

KIANGSU PROVINCE

Changchow	5th Prov. M.S.	6
Chinkiang	Pres. H.S.	7
	*6th Prov. M.S.	1
Haimen	*Private M.S.	1
Hweichowfu	*Gov. M.S.	1
Hwaiian	9th Prov. M.S.	2
Kiangyin	*James Sprunt Acad	1
	NanTsiang M.S.	1

* not represented last year

Kiangsu Province (cont)

NANKING

	*Central China Conf Acad	2
	*Chong Yin M.S.	1
	Christian M.S.	3
	1st Prov. M.S.	4
	*1st Prov Agri Sch.	2
	*1st Prov. Teacher Sch	3
	Prov. Law School	1
	Univ. M.S.	58
	Y.M.C.A. M.S.	6
Shanghai	Bapt Coll & M.S.	6
	Chentan College	1
	Christian Institute	1
	Chung Hwa Engineering C	1
	Fuhtan College	1
	L'Academie Utopia	1
	Lowrie H.S.	1
	Medhurst College	1
	Nanyang Inst of Tech	2
	Nanyang M.S.	10
	St. John's Univ. & H.S.	34
	Vincent High School	2
	Y.M.C.A. M.S.	2
Soochow	Anglo-Chinese Acad	2
	2nd Prov. Agri Sch	1
	Univ. & M.S.	3
	Vincent Miller Acad	3
	Yates Academy	2
Taitsang	*4th Prov M.S.	1
Yangchow	*8th Prov M.S.	2

KWANGSI PROVINCE

Lungchow	*Middle School	2
----------	----------------	---

KWANGTUNG PROVINCE

Hongkong	Ying Wa College	2
	*St. Paul's College	1
Swatow	Anglo-Chinese College	2
	Baptist Academy	3
	*Commercial School	1

SHANSI PROVINCE

Hodung	*Second M.S.	1
Ningwu	*5th M.S.	2
Sin Hsien	*M.S.	1
Taiyuanfu	*1st M.S.	5
	*Yang Shen M.S.	3
Wu Tai	*M.S.	1

SHANTUNG PROVINCE

Tsinan	College of Law	1
	1st Prov. M.S.	2
Tsingtao	Coll and M.S.	1

SZETCHUEN PROVINCE

Chengtu	Gov't M.S.	1
---------	------------	---

DUTCH BORNIO

Anglo-Chinese College	14 provinces 44 cities 90 schools	1
-----------------------	---	---

MIDDLE SCHOOL STUDENTS.
THE UNIVERSITY OF NANKING. (Fall 1919).

Old 125
New 113
238

CHURCH.

Methodist Episcopal.....28
Presbyterian.....28
Christian.....12
Southern Methodist.....9
Protestant Episcopal Church.....4
Congregational Church.....1
Baptist.....1
Christian and Missionary Alliance.....1
Christians.....84
Non-Christians.....141
Uncertain.....13
238

PROVINCES.

Kiangsu.....114
Anhui.....41
Chekiang.....18
Kiangsi.....10
Kwangtung.....9
KORIA.....8
Hunan.....5
Shili.....5
Shantung.....4
Szechuan.....3
Sokien.....2
Kansuh.....2
Szechuen.....1
Honan.....1
Pentien.....1
Kiangsi.....1
Uncertain.....13
238

AGE.

13 years old.... 1	18 years old... 45	23 years old.... 9
14 years old.... 2	19 years old.... 39	24 years old.... 4
15 years old.... 8	20 years old.... 39	25 years old.... 2
16 years old... 20	21 years old.... 24	26 years old.... 2
17 years old.... 36	22 years old.... 13	
<u>87</u>	<u>143</u>	<u>15</u>

The average of 225 students is 19.331 years old.
There are 13 students who are uncertain in age.

Middle School Students Fall 1919 (2).

Year in School.

8a....29, 8b....22, 9a....32, 9b....34, 10a....15, 10b....19,
11a....23, 11b....20, H.P.....27, Special....6, J.C....3,
Left School....8.

Eighth Year.....50
Ninth Year.....66
Tenth Year.....54
Eleventh Year....45
H.P., J.C., Sp.....36
Left School 8
238

From What School.

From University H. Primary.....55
From Other Schools.....183
238

Home Town.

In Nanking.....86
In Other Cities.....152
238

REGISTRAR Li H. Teh.

UNIVERSITY OF NANKING

NANKING, CHINA

SUMMARY STATISTICS, FALL 1919

	Senior College of Ag. & For.	Senior College of Arts	Junior College	School of Education	Middle School	Higher Primary	Lower Primary	Kinder- garten	Language Schools	Totals without duplication
Total students	38	50	177	44	238	154	27	11	72	731
Former ,,	23	29	98	39	125	60	13		9	330
New ,,	15	21	79	5	113	94	14	11	63	401
From Mission Schools	15	21	41	3	48					125
From Gov't Schools			38	2	85					123
First Year Students	15	18	102	14	50	42	6	11	63	
Second Year ,,	0	12	61	13	66	72			9	
Third Year ,,	22	20		10	34	40	8			
Fourth Year ,,				6	43		13			
Specials, etc.	1		14		36					44
Left School		1	6	1	8					15
Non-Christians	28	19	83	15	140	140	19	1		432
Uncertain					13					13
Christians	10	31	87	29	85	14	8	10	72	299
Baptist	1	3	8	3	1				15	28
C. I. M.		2	1	1						3
C. M. Alliance			2	2	1					3
Congregational		1	1		1					3
Disciples	2	3	20	7	12	2		1	10	50
Episcopalian		1	3		4					8
Independent	2	1	3							6
L. M. S.	1		1							2
Methodist		10	21	7	38	7	4	7	6	93
Presbyterian	4	6	18	9	28	3	4	2	18	83
Others		4	9		2				23	38
Provinces and Countries	6	7	13	9	16	14	2	1		23
Anhwei	5	4	9	5	41	32				86
Chekiang		3	18	6	18	1				38
Chihli	5	2	9		5					21
Fengtien					1					1
Fukien			6	1	2	1				9
Honau				1	1	3				4
Hunan			6	1	5	1				12
Hupeh		1	3	1	3	1				8
Kiangsi		2	5	1	10	4				21
Kiangsu	22	35	88	24	114	103	26	11		375
Kansu					2					2
Kwangsi			2		1					3
Kwangtung	2	2	5	4	9	1				18
Kweichow						1				1
Shansi			13							13
Shantung	2		2		4	2				10
Szechwan			1		1					2
Yunnan	1									1
Dutch Borneo			1							1
Java						4	1			4
Korea					8	2				8
Singapore						2				2
Middle Schools represented in College	20	26	72	8						90
Primary Schools represented in Mid. Sch.					37					37
Number of Teachers	8	10	13	19	21	14	4	2	36	95
No. of Classes held	15	15	31		73	69	28	1		232
Class Registrations	191	276	839	260	1060	1168	275	11		3820
Average class	13	16	27		14.5	17	10	11		16

UNIVERSITY OF NANKING

NANKING, CHINA

SUMMARY STATISTICS, SPRING, 1920

	College of Ag. and For.	Senior College of Arts	Junior College	School of Education	Middle School	Higher Primary	Lower Primary	Kinder-garten	Language School	Nurses Training School	Totals without Duplication	Totals for Fall 1919	
Total students	25	33	40	175	35	226	174	31	15	86	25	830	751
Former ,,	25		39	163	33	171	117	23	10	77	20	645	350
New ,,		33	1	12	2	55	48	8	5	9	5	178	401
From Mission Schools			1	9	2	33	38	6			4	93	125
From Gov't Schools		33		3		22	10	2			1	71	123
First Year Students	14		17	105	8	48	51	5	15	72	10	337	307
Second Year ,,	0		11	54	13	50	70	6		14	9	214	220
Third Year ,,	11		10		8	32	44	9			6	112	124
Fourth Year ,,				6		38		11				49	56
Specials, etc.		33	2	16		37	9					97	44
Left School				3				4				7	15
Non-Christians	17	28	14	81	13	131	127	15	1			414	432
Christians	8	5	26	83	22	95	38	16	14	86	25	386	299
Baptist	1		2	8	4	1				13		25	28
C. I. M.			1	1	1	1					2	5	3
Congregational				1								1	3
Disciples	1		3	17	5	15	4	8	2	13	13	76	50
Episcopalian			1	3		9	3				1	17	8
Independent	1		1	3								5	6
L. M. S.	1			1	1							2	2
Methodist			10	24	4	40	25	4	11	13	6	133	93
Presbyterian	4	1	6	17	7	27	2	4	1	20		82	83
Others		4	2	8		2	4			27	3	50	41
Provinces and Countries	6	7	8	18	7	15	13	5	1		5	20	23
Anhwei		4	10	21	4	46	43				7	131	86
Chekiang	2	4	5	17	5	10	6	1			2	47	38
Chihli			1	7		7	6	2				23	21
Fukien	1			4	1	5	9					19	9
Honan		4		1	1	1	5					11	4
Hunan		6		3		6	3					18	12
Hupeh		4	1	5		3	5	2			1	21	
Kansu				1		1						2	
Kiangsi			1	7	2	13	3				2	27	21
Kiangsu	14	6	20	70	19	114	62	25	15		13	339	375
Kirin				2								2	
Kwangsi				2		2	1					5	3
Kwangtung	5		1	5	3	6	9					26	18
Shansi	1			13								14	13
Shantung	2	3	1	1		5						12	10
Szechwan				3		2						5	2
Dutch Borneo				1								1	1
Java				1				1				2	4
Korea						5	12					17	8
Singapore							1					1	2
Middle Schools represented in College	17	23	20	75	11							95	90
Primary Schools represented		3				69	65					136	135
Number of Teachers	7	3	10	11	20	17	12	4	2	47	7	110	95
No. of Classes held	12	4	17	24		64	68	28	1		13	231	232
Class Registrations	124	132	226	726		1,030	1,391	308	15		104	4,056	3,820
Average class	10	33	13	30		16	20.5	11	15		8	17.5	16

UNIVERSITY OF NANKING
Summary Statistics
1919-1920.

	Fall 1919	Spring 1920	Totals
Applicants for admission	105	30	135
Admitted	85	24	109
Left or dismissed within one month	6	3	9
New students received during the year	79	21	100
Those coming from Mission Middle Schools	41	18	59
Those coming from Government " "	38	3	41
Total former students returned	184	218	284
Total students	263	239	12
Dismissed for poor work	5	7	5
Expelled	10	5	22
Left during the term	17	12	38
Graduates from Senior College	17	21	3
Did not return after the strike	3	3	3
Total students completing the term's work	248	212	18
Number of Provinces represented	15	18	18
Number of Middle Schools from which students came	90	95	96
Number of Christians	87	83	118
Junior College	31	26	2514
Senior College of Arts	10	8	21
Senior College of Agri. & For.	10	8	32
Number of Non-Christians	83	81	7
Junior College	19	14	8
Senior College of Arts	28	17	15
Senior College of Agric. & For.	61	57	17
Number of different courses offered	1306	1208	17
Number of class registrations			7
Average number in classes			8
Number of teachers			15
Chinese - Trained in China			17
- Returned Students			17
Total			17
Foreigners			17
Graduates - from College of Agriculture and Forestry	7	12	19
College of Arts	10	9	19
Junior College not including Sch. of Ed.		25	25
School of Education - Higher Course		5	5

N. B. These figures do not include the Short Course in Sericulture, in which 34 students were registered in the Spring 1920.

UNIVERSITY OF NANKING
Summary Statistics
1889-1920

		Students	Grads.	Students		Grads.	Students					Grads.			
1889	11	1896	70	1903	110	4									
1890	33	1897	75	1904	122	15									
1891	35	1898	190	1905	152	5									
1892	39	1899	100	1906	278	5									
1893	40	1900	115	1907	255	14									
1894	58	1901	128	1908	262	9									
1895	61	1902	154	1909	353										
Col-lege of Agri-cul-ture & For-estry begun 1914	Short Course in Seri-cul-ture 1918	Col-lege of Arts 1889	Un-ni-versi-ty 1917	Mid-dle Sch-ool, be-fore 1917	Sch-ool of Edu-ca-tion, be-fore 1917	High-er Pri-mary, be-fore 1917	Low-er Pri-mary, be-fore 1917	Kin-dler-gar-ten	Mer-its Sch-ool	Nun-ces Sch-ool	Lang-choo Sch-ool	San-tal Sch-ool	Total Non-Chris-tians	Gr-and total with-out plu-ga-tion	
1910 Stud.		29		118		233	52						158	273	432
Grads															
1911 Stud.		48		116		222	56						181	261	442
Grads															
1912 Stud.		56		127		224	42	40		47					536
Grads															
1913 Stud.		56		137		240	66			50					549
Grads		6													6
1914 Spring		31		111	75	174	61	37		53					543
Grads		12						10							22
Fall	14	41		114	35	138	80	42		45					509
Grads															
1915 Spring	25	35		123	13	171	55	38		45					510
Grads		9		16		13									38
Fall	58	42		140	20	131	64	38		51					544
Grads				8		14									22
1916 Spring	46	53		153	21	121	46	32		51	269	254			533
Grads		9		9	9	17									44
Fall	56	62		161	15	107	29	26		68					510
Grads		1		5		13		12							31
1917 Spring	54	72		149	15	119	50			65					524
Grads		1		20		20									41
Fall	46	40	146	152	42	90	17			76	264	288			522
Grads															
1918 Spring	45	73	38	138	145	43	112	27		76					642
Grads	6	9		20		14									49
Summer	60				78										138
Fall	43	49	188	145	35	121	22	12	18	71					654
Grads		5		13											23
1919 Spring	42	26	42	161	167	45	115	27	14	21	91				705
Grads	17	7		13	18	7	12	8							4
Fall	58		50	177	238	44	154	27	11	20	72	432	299		731
Grads	7		10		12										39
1920 Spring	25	34	40	175	225	35	174	31	15	25	86	414	386		830
Grads	12				13	12	6	4							98

T E N Y E A R D E V E L O P M E N T S
Exclusive of all Medical

<u>1910</u>	1910	1920	<u>1920</u>
<u>Students:</u>	College..... 56	College.....	270
	Total enrollment..... 501	Total enrollment.....	780
	Graduates 1910-16incl. 41	Graduates, 1920.....	41
	Provinces represented 8	Provinces represented.....	18
<u>Teachers:</u>	Chinese..... 20	Chinese.....	49
	Foreign..... 17	Foreign.....	33
	Board-supported..... 10	Board-supported.....	17
	Non-Board-supported.. 17	Non-Board-supported.....	16
<u>Departments:</u>	Arts College High School Intermediate School Primary School	Arts College; College of Agriculture & Forestry; School of Education; Junior College; Language School; Middle School; Primary Schools and Kindergarten (Model School) Summer Schools, Agr. & Educ.	
<u>Quality of Work:</u>	Library Books, 2,000	Library Books.....	15,367
	Loans recorded, None	Loans recorded.....	22,961
	Courses offered, e.g.		
	in Chemistry 2	In Chemistry.....	22
	in Econom. & Soc. 2	In economics & Sociology	10
	in Physics..... 3	In Physics.....	5
	in English..... 4	In English	15
	American Trained Chinese Teachers 0	American Trained Chinese Teachers	8
<u>Buildings:</u>	School Buildings..... 9	School Buildings.....	18
	Houses..... 9	Houses.....	17
<u>Land:</u>	Approximately..... acres 20	Approximately..... acres	96
<u>Total Property:</u>	approximately Mex. \$200,000	Approximately..... Mex.	850,000
<u>Students Fees:</u> Mex. 23,000	Students Fess Mex.	59,000
<u>Budgets:</u>	in Mex. dollars (1912) 37,300	Budgets in Mex. dollars	162,740

UNIVERSITY OF NANKING

NANKING, CHINA

SUMMARY STATISTICS, SPRING, 1920

	College of Ag. and For. Senior Short College Course	Senior College of Arts	Junior College	School of Education	Middle School	Higher Primary	Lower Primary	Kinder-garten	Language School	Nurses Training School	Totals without Duplication	Totals for Fall 1919	
Total students	25	33	40	175	35	226	174	31	15	86	25	830	751
Former "	25		39	163	33	171	117	23	10	77	20	645	350
New "		33	1	12	2	55	48	8	5	9	5	178	401
From Mission Schools			1	9	2	33	38	6			4	93	125
From Gov't Schools		33		3		22	10	2			1	71	123
First Year Students	14		17	105	8	48	51	5	15	72	10	337	307
Second Year "	0		11	54	13	50	70	6		14	9	214	220
Third Year "	11		10		8	32	44	9			6	112	124
Fourth Year "					6	38		11				49	56
Specials, etc.		33	2	16		37	9					97	44
Left School				3				4				7	15
Non-Christians	17	28	14	81	13	131	127	15	1			414	432
Christians	8	5	26	83	22	95	38	16	14	86	25	386	299
Baptist	1		2	8	4	1				13		25	28
C. I. M.			1	1	1	1					2	5	3
Congregational				1								1	3
Disciples	1		3	17	5	15	4	8	2	13	13	76	50
Episcopalian			1	3		9	3				1	17	8
Independent	1		1	3								5	6
L. M. S.	1			1	1							2	2
Methodist			10	24	4	40	25	4	11	13	6	133	93
Presbyterian	4	1	6	17	7	27	2	4	1	20		82	83
Others		4	2	8		2	4			27	3	50	41
Provinces and Countries	6	7	8	18	7	15	13	5	1		5	20	23
Anhwei		4	10	21	4	46	43				7	131	86
Chekiang	2	4	5	17	5	10	6	1			2	47	38
Chihli			1	7		7	6	2				23	21
Fukien	1			4	1	5	9					19	9
Honan		4		1	1	1	5					11	4
Hunan		6		3		6	3					18	12
Hupoh		4	1	5		3	5	2			1	21	
Kansu				1		1						2	
Kiangsi			1	7	2	13	3				2	27	21
Kiangsu	14	6	20	70	19	114	62	25	15		13	339	375
Kirin				2								2	
Kwangsi				2		2	1					5	3
Kwangtung	5		1	5	3	6	9					26	18
Shansi	1			13								14	13
Shantung	2	3	1	1		5						12	10
Szechwan				3		2						5	2
Dutch Borneo				1								1	1
Java				1								2	4
Korea						5	12					17	8
Singapore							1					1	2
Middle Schools represented in College	17	23	20	75	11							95	90
Primary Schools represented		3				69	65					136	135
Number of Teachers	7	3	10	11	20	17	12	4	2	47	7	110	95
No. of Classes held	12	4	17	24		64	68	28	1		13	231	232
Class Registrations	124	132	226	726		1,030	1,391	308	15		104	4,056	3,820
Average class	10	33	13	30		16	20.5	11	15		8	17.5	16

Students		Grads.	
1889	11	1896	70
1890	33	1897	75
1891	35	1898	190
1892	39	1899	130
1893	40	1900	115
1894	58	1901	128
1895	61	1902	154
		1903	110
		1904	122
		1905	152
		1906	278
		1907	255
		1908	262
		1909	353

	Col-lege of Agri-cul-ture & For-est-ry begun 1914	Short-Course in Seri-cul-ture 1918	Col-lege of Arts 1889	Un-der-Col-lege 1917	Mid-dle Sch-ool, be-fore 1917 High Sch-ool, 1889	Sch-ool of Edu-ca-tion, be-fore 1917 Nor-Mal Sch-ool-1912	High-er Pri-mary, be-fore 1917 Mid-dle Sch-ool, 1889	Low-er Pri-mary, be-fore 1917 Prac-tice Sch-ool	Kin-dergar-ten	M-iddle Sch-ool	Nur-sery Sch-ool	Un-der Sch-ool	La-bor Sch-ool	Sch-ool of Ch-risti-an-ity	To-tal Non-Ch-risti-an	Gr-and to-tal with-out du-pli-ca-tion
1910 Stud. Grads			29		118		238	52						158	273	432
1911 Stud. Grads.			48		116		222	56						181	261	442
1912 Stud. Grads.			56		127		224	42	40			47				536
1913 Stud. Grads.			56		137		240	66				50				549
1914 Spring Grads.			31		111	75	174	61	37			53				543
1914 Fall Grads	14		12		114	35	138	80	10			42	45			22
1915 Spring Grads	25		35		123	18	171	55	38			45				510
1915 Fall Grads.	58		9		16	20	131	64	38			51				38
1916 Spring Grads.	46		53		153	21	121	46	32			51	269	254		523
1916 Fall Grads.	56		9		9	15	107	29	26			68				44
1917 Spring Grads.	54		62		161	15	107	29	26			68				510
1917 Fall Grads.	46		1	146	5	42	90	17	12			65	264	288		31
1918 Spring Grads.	45	73	72		149	15	119	50				65				524
1918 Summer	6		1		20	20	20									41
1918 Fall Grads.	43		40	146	152	42	90	17				76	264	288		522
1919 Spring Grads.	42	26	38	138	145	43	112	27				76				642
1919 Summer	6		9		20	78	34									49
1919 Fall Grads.	43		49	188	145	35	121	22	12	18	71					138
1920 Spring Grads.	42	26	42	161	167	43	115	27	14	21	91					654
1920 Summer	17		7	12	18	7	12	8								23
1920 Fall Grads.	33		50	177	253	44	154	27	11	20	72	432	299	731		705
1920 Summer	7		10		12											74
1920 Fall Grads.	25	34	40	175	225	35	174	31	15	25	83	414	386	830		731
1920 Summer	12		9	31	23	12	12	8	4							29

Seventeenth Meeting of Board of Managers - 13 October 1920

EXHIBIT F

Statistics for the University of Nanking

	1920-1921	1919
Senior Colleges - graduate students	4	0
College of Agriculture and Forestry	21	25
College of Arts and Science	52	40
Junior College	173	177
Middle School	224	226
Model School		
Higher primary	141	163
Lower primary	31	31
Kindergarten	15	15
Language School	101	86
Nurses' Training School	26	25
Totals without duplication	779	788
Total Christian students	438	386
Total non-Christian students	341	414

Statistics for the Colleges

New students registered		New students	
Graduate department	4	from mission schools	36
Senior Colleges	2	from non-mission schools	45
Junior College	75	Per cent. from non mission	
Total	<u>81</u>	schools	56%
Last year's students		All college students	141
returned	156	from mission schools	141
Former students returned	13	from non-mission schools	101
Total students	<u>250</u>	Per cent. from non-mission	
Already left	8	schools	42%
Total college students		Christian college students	128
now	2 42	Non-Christian college	
		students	114
		Average age of new students	20 yrs.
		Average of age of all	
		college students	21.6 yrs.

UNIVERSITY OF NANKING
Summary Statistics
1889-1920

Began in 1889 with 11 Students.

	College of Agri- culture & For- estry begun 1914	Short Course in Seri- cul- ture 1918	College of Arts 1889	Junior College 1917	Middle School be- fore 1917 High School 1889	School of Educa- tion, before 1917 Normal School 1912	Higher Primary before 1917 Middle School 1889
<u>1914</u>							
Spring Grads.			31		111	76	174
Fall Grads.	14		12 41		114	35	138
<u>1915</u>					123	18	171
Spring Grads.	25		35 9		16 140	20	13 131
Fall Grads.	58		42		8		14
<u>1916</u>					153	21	121
Spring Grads.	46		53 9		9	9	17
Fall Grads.	56		62 1		161 5	15	107 13
<u>1917</u>					149	15	119
Spring Grads.	54		72 1		20		20
Fall Grads.	46		40	146	152	42	90
<u>1918</u>					145	43	112
Spring Grads.	45 6	73	38 9	138	20		14
Summer Grads.	60					78	
Fall Grads.	43		49 5	138	145 18	36	121
<u>1919</u>					167	43	115
Spring Grads.	42 17	26	42 7	161 12	18	7	12
Fall Grads.	38 7		50 10	177	238 12	44	154
<u>1920</u>					226	35	174
Spring Grads.	26 12	34	40 9	175 31	23	12	12

	Low- er Pri- mary be- fore 1917 Prac- tice Sch- ool	K i n d el er gl ra 7 r t e n	M e d i c e l e a l l 3 S c h o o l	N u r s e s H o m e o r i g i n g	L a n g u a g e 2 S c h o o l	Total Chris- tians	Total Non- Chris- tians	Grand Total without duplica- tion
<u>1914</u>								
Spring Grads.	61		37 10		53			543 22
Fall Grads.	80		42		45			509
<u>1915</u>								
Spring Grads.	55		38		45			510 38
Fall Grads.	64		38		51			544 22
<u>1916</u>								
Spring Grads.	46		32		51	269	254	523 44
Fall Grads.	29		26 12		68			510 31
<u>1917</u>								
Spring Grads.	50				65			524 41
Fall Grads.	17				76	264	288	522
<u>1918</u>								
Spring Grads.	27				76			642 49
Summer Fall Grads.	22	12		18	71			138 654 23
<u>1919</u>								
Spring Grads.	27	14		21	91	452	222	705 74 74
Fall Grads.	8	11		21	72	432	299	731 29
<u>1920</u>								
Spring Grads.	31	15		25	86	414	386	830 98

FILING DEPT

DEC 4 1919

TREAS. DEPT

PRESBYTERIAN SCHOLARSHIP BOYS IN UNIVERSITY OF NANKING

Autumn Semester 1919-1920

1. Hsiao Kwoh-ts'iang - 2nd yr. M. S.; from Hubugiai boys' school; entered University 1915.
2. Han Fah-i - 1st yr. M. S.; from Hubugiai boys' school; entered University fall of 1919.
3. Fang Li-chen - 1st yr. M. S.; from Teng Ching (Tong Tsing); passed Suwan School Board examinations; recommended by Mr. Gray; entered University fall of 1919.
4. Liu Pao-kw'en - 1st yr. Senior College of Arts; came from Kingchow Theological Seminary, Hupeh; belongs to Presbyterian Church, Tsingtao; father is graduate of Tungchow College and teaching in Hupeh Seminary. Recommended by Mr. Drummond and Mr. Reiser.
5. Ts'ien Tai-hsing - 2nd yr. Junior College of Arts; Church of Scotland Mission, Ichang; given scholarship by Dr. Williams in spring semester 1918; is a Presbyterian; entered University in 1917.
6. Wang I-shui - 2nd yr. M. S.; recommended by Mr. Drummond; entered University fall 1918.
7. Wu Fang-ling - in M. S. to get up his English to enter Junior College; supported by Mr. Ruland, Ichowfu, Shantung; entered University fall 1918.
8. Chu Chi-ch'ang - first yr. Senior College of Arts; recommended by Mr. Nydenstricker; given scholarship spring semester 1919; entered University fall of 1917; preparing to preach or teach.
9. Wang Yen-ru - 1st yr. Junior College; recommended by Mr. Richardson; given scholarship when entering spring semester 1919; preparing to preach or teach.
10. Tsh Chia-chi - 4th yr. M. S.; recommended by Mrs. Gray; prepared at Hubugiai; entered University in fall of 1917.
11. Liu Shen-pao - 1st yr. M. S.; recommended by Mrs. Gray; entered University from Hubugiai in fall of 1918.
12. Pu Kwan-ti -- 4th yr. M. S.; recommended by Mr. Williams; entered University 1913.
13. Hu I-chen - 4th yr. M. S.; recommended by Dr. Williams; came from Lowrie Institute; father dead; entered University fall of 1917.
14. Mao Deh-en - 3rd yr. M. S., recommended by Mr. Drummond; has had scholarship for six years; entered University 1914; father elder at Shuan Tang.
15. Wu Wei-san - 3rd yr. M. S.; recommended by Mr. Bullock; has had scholarship six years; entered University 1913.
16. Wang Chuin-hai - 3rd yr. M. S.; recommended by Mr. Bullock; has had scholarship for six years; entered University 1913.
17. Tang I - 2nd yr. Junior College of Agriculture; recommended by Mr. C. B. Day; entered University fall 1918; given scholarship spring 1919.

Presbyterian Scholarship Boys in University of Nanking

Autumn Semester 1919-1920 (2)

18. Lan Sih-chi - 1st yr. Junior College of Arts; recommended by Mr. Dowling; entered on scholarship fall 1918.
19. Feng Pan-wen - 1st yr. Senior College of Arts; has been teaching for station two years, one year Chiyung, one year day school examiner; family Scotch Presbyterian Mission, Ichang; entered fall 1919.
20. Kang Tsu-tshen - 1st yr. M. S.; comes from Tung Tsing; recommended by Mr. Gray on trial; entered University 1919.
21. Pan Lih-ch'en - 1st yr. M. S.; comes from Tung Tsing; recommended by Mr. Gray; entered on trial fall 1919.
22. Chu I-teh; 1st yr. M. S.; recommended by Mr. Gray; entered University on scholarship in 1916.
23. Wang Li-feng - 1st yr. M. S.; recommended by Mr. Carter; entered University fall 1919.
24. Tang Yang-ling - M. S. normal course; sent by Mr. C. H. Dear, Hengchow.
25. Liu I-yung - 1st yr. M. S.; recommended by Miss Mead.
26. Yü Yiu-ren - 1st yr. Senior College; member of Southern Presbyterian Church, Kashing; recommended by Dr. Bowen very strongly as deserving of a scholarship; entered University fall 1918.
27. Fan Ting-chiu - 1st yr. Junior College; recommended by Mr. Kepler, Siangtan; entered University fall of 1919.
28. Chu Yü-feng - M. S.; from Gu Yung; recommended conditionally by Mr. Gray; entered University autumn 1919.